

***Spiculamina delicata* gen. et sp. n., a new  
xenophyophore from the eastern Pacific (Psamminidae)**

**O.E. Kamenskaya**

*P.P. Shirshov Institute of Oceanology, Russian Academy of Sciences, Nakhimovsky Ave., 36,  
Moscow 117997, Russia. e-mail: okamenskaya@ocean.ru*

**ABSTRACT:** A new genus and new species of xenophyophores is described from the abyssal depths of the eastern Pacific. The presence of external xenophyae arranged in a surface layer and internal xenophyae in the lumen of tubular test allow us to attribute *Spiculamina delicata* **gen. et sp. n.** to Psamminidae. The new genus is distinguished from other genera of the family by tree-like form of the test.

**KEYWORDS:** abyssal fauna, Protista, xenophyophores, *Spiculamina delicata* **gen. et sp. n.**, taxonomy, Pacific Ocean.

***Spiculamina delicata* gen. et sp. n., новая  
ксенофиофория из восточной части Тихого океана  
(Psamminidae)**

**О.Е. Каменская**

*Институт океанологии им. П.П. Ширшова, Российская Академия наук, Нахимовский  
проспект 36, Москва 117997, Россия. e-mail: okamenskaya@ocean.ru*

**РЕЗЮМЕ:** Описан новый род и вид ксенофиофорий с абиссальных глубин в восточной части Тихого океана. Наличие внешних ксенофий, собранных в поверхностный слой и внутренних ксенофий, расположенных в просвете трубчатой раковины позволяют нам отнести *Spiculamina delicata* **gen. et sp. n.** к Psamminidae. Новый род отличается от других родов семейства древовидной формой раковины.

**КЛЮЧЕВЫЕ СЛОВА:** абиссальная фауна, Protista, ксенофиофории, *Spiculamina delicata* **gen. et sp. n.**, таксономия, Тихий океан.

**Introduction**

Xenophyophores are marine rhizopod protists. The cytoplasmic body is a multinucleate plasmodium (granellare) enclosed in a branched system of tubes composed of a transparent organic substance. Pseudopodia extend through the free ends of tubes, but their form is poorly known. Cytoplasm contains numerous barite crystals (granellae). Fecal pellets (stercomes) are retained outside the cytoplasm and the organic tube system as dark strings or masses (stercomare). A test consists of foreign matter (xenophyae) and stercomare in varying proportions. Agglutinated test usually envelops organic tube system, but sometimes organic tubes are located among xenophyae and stercomare. Xenophyophores range from a few millimeters to 25 cm in size. They occur in the Atlantic, Pacific, Indian and Southern Oceans at the bathyal, abyssal and

hadal depths (Tendal, 1972; 1975; 1994; 1996; Tendal, Gooday, 1981; Tendal, Lewis, 1978; Gooday, 1991; 1996; Gooday, Tendal, 1988; Gooday, Tendal, 2000; Levin, Thomas, 1988; Kamenskaya, 1987; 1988; 1998; 2000) and in the Mediterranean (Soetaert et al., 1991). An unusual, large (up to 40 mm) protist with tree-like form and test consisting of sponge spicules was found at abyssal depth in the eastern Pacific. The description of *Spiculamina delicata* **gen. et sp. n.** from Psamminidae is given here.

### Material and Methods

For SEM study fragments of the holotype specimen were mounted on aluminium stubs and coated with Au. Analysis of chemical constituents (Ba) was performed with an energy-dispersive X-ray spectrographic analyzer (EDS) connected to a scanning electron microscope (CamScan). The holotype is deposited in the collection of the Zoological Museum of the Moscow State University.

### Results

Class Xenophyophorea Schulze, 1904  
Order Psamminida Tendal, 1972  
Family Psamminidae Haeckel, 1889  
*Spiculamina* **gen. n.**

*Diagnosis.* Test of tree-like form, up to 40 mm in height, probably attached. It consists of tubes of different diameters. The central tube is 3–5 times thicker than the peripheral ones. Anastomosing of tubes occur, but very rarely. Xenophyae are sponge spicules, oriented outwards chaotically so that the test has a shaggy appearance. Internal space of the tubes is full of strings and masses of stercomare and granellare, and sparse xenophyae.

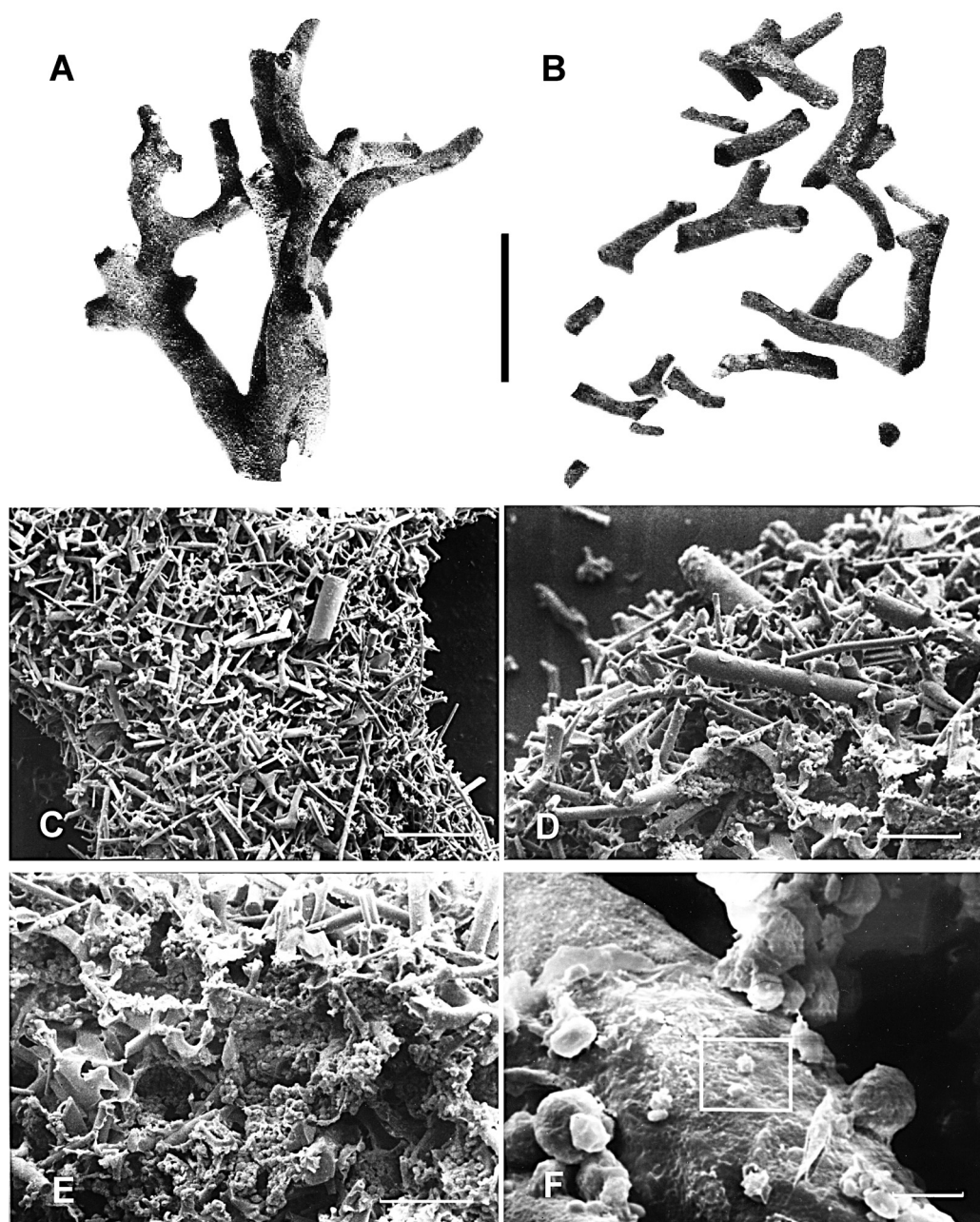
*Type species.* *Spiculamina delicata* **sp. n.**

*Etymology.* From Latin “spica” — arrow and “spicula” — main element of sponge skeleton, because the test of this xenophyophore consists of sponge spicules.

*Remarks.* Tubular form of test occurs usually among members of the xenophyophore family Syringamminidae Tendal, 1972. However the presence of xenophyae in the lumen of tubular test allow us to attribute *Spiculam-*

*mina* **gen. et sp. n.** to the family Psamminidae Haeckel, 1889. Xenophyophores of this family have tests usually solid, often fragile and varying in form from platy to lumpy, branched or reticulate. External xenophyae arranged in surface layer; occasionally test consists of several layers. There is very little cement (Gooday, Tendal, 2000). Presently there are five genera in Psamminidae. *Psammmina* Haeckel, 1889 has a fragile, basically plate-like test. External xenophyae are firmly cemented to form upper and lower plates, internal xenophyae are sparse, commonly forming pillar or bar-like structures between plates. *Semipsammmina* Tendal, 1975 has flat attached test, consisting of single fragile layer of xenophyae covering granellare and stercomare which are attached directly to substratum. In *Cerelpepema* Laubenfelds, 1936 a lumpy test consists of numerous thin layers of xenophyae (radiolarian tests), arranged in wafer-like stack. Granellare and stercomare occupy flat spaces between these layers. All described species of *Galatheammmina* Tendal, 1972 have different test morphology from three-dimensional star-shaped form to rounded lump with root-like bars at base. Interior consists of loose accumulation of xenophyae with granellare and stercomare between them. Species of *Reticulammina* Tendal, 1972 have friable, free tests, hemispherical or subrectangular in shape and consisting of anastomosing branches and plate-shaped elements which delimit open spaces. Surface xenophyae form more or less firmly cemented layer. Interior contains loose accumulation of xenophyae between which stercomare and granellare interweave (Gooday, Tendal, 2000).

*Spiculamina* **gen. n.** have external xenophyae arranged in a surface layer, as do other species of Psamminidae. The lumen of the test contains loose mass of xenophyae with granellare and stercomare between them. Very little cement is used. *Spiculamina* **gen. n.** resembles most to *Reticulammina* which has anastomosing tubes but differs from it by the tree-like form of the test in which the basal tube is thicker than peripheral ones.



**Fig.1.** *Sciculammima delicata* gen. et sp. n., holotype.

A — lateral view of the test; B — fragments of the test; C — xenophyae (sponge spicules); D — wall of the test, consisting of xenophyae; E — deformed strings of stercomare; F — granellare with granellae (boxed). Scale bars: A — 10 mm, B — 10 mm, C — 300  $\mu$ m, D — 100  $\mu$ m, E — 100  $\mu$ m, F — 10  $\mu$ m.

**Рис.1.** *Sciculammima delicata* gen. et sp. n., голотип.

A — вид раковины сбоку; B — фрагменты раковины; C — ксенофии (спикулы губок); D — стенка раковины, состоящая из ксенофий; E — деформированные тяжи стеркомар; F — гранелляры с гранеллами (в скобках). Масштаб: A — 10 мм, B — 10 мм, C — 300 мкм, D — 100 мкм, E — 100 мкм, F — 10 мкм.

*Spiculamina delicata* sp. n.

Fig. 1A–F.

*Material examined.* Clipperton Fracture Zone. R/V “Geolog Petr Antropov”, St. 5458 (11°52.1'N, 136°06.3'W), depths of about 5400 m. One dry specimen and a lot of fragments of it.

*Type material.* Specimen of about 40 mm (holotype) and a lot of fragments from 5 to 20 mm. The holotype is deposited in the Zoological Museum of the Moscow State University (No.F-13).

*Description.* Intact test was tree-like in form, consisting of tubes of different diameter. Tubes pointing in all directions were cylindrical and without any deformations. Diameter of tubes decreased from basal to peripheral parts of test from 5 to 1 mm. The test is very fragile; many peripheral tubes were broken during this study (Fig. 1A,B). On the intact specimen anastomosing tubes seldom occurred; usually tubes divided dichotomously or polychotomously. The only type of xenophyae is presented by fragments of sponge spicules (Fig. 1C). In the wall of test, xenophyae are directed chaotically so that the test has a shaggy appearance. Wall of the large tube is about 100 µm of thickness (Fig. 1D). Interior of the tubes is full of strings of stercomare mixed with xenophyae and granellare (Fig. 1E). Stercomare consist of globular stercomes up to 10 µm in diameter. EDS elemental analysis of a single stercome reveals the presence of Si, Al, Fe, K, Ca, Mg and Ti. Granellae (Fig. 1F) are about 1–2 µm and contain a high concentration of Ba (Fig. 2).

*Etymology.* From Latin “delicate” — fragile, delicate.

*Distribution.* The species is found on the abyssal plane near the Clipperton Fracture Zone at the depth of about 5400 m.

*Remarks.* The test may have been attached to a substratum. There is no bottom sediment between the surface xenophyae, suggesting that the branching part of the test is raised above the surface of the sea bottom sediment or hard substratum.

Unfortunately, the number and dimensions of deformed strings of stercomare and granel-

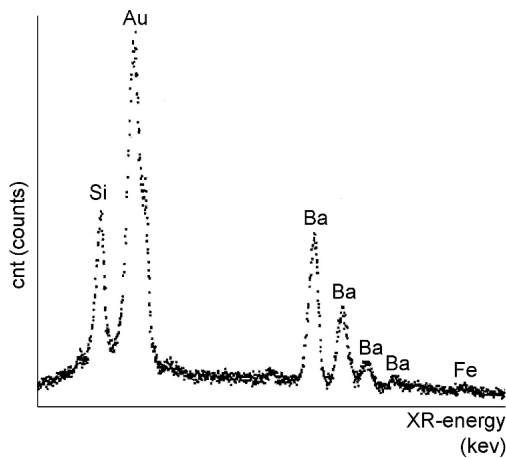
lare in dry material could not be determined. EDS elemental analysis of a single stercome from stercomare and a single crystal from dried cytoplasm reveals elements typical for stercomes (Riemann et al., 1993; Kamenskaya, 1988; Kamenskaya, Saidova, 1998) and for granellae (Tendal, 1994; Kamenskaya, 2000), respectively.

**Acknowledgments**

I am deeply grateful to A.J. Gooday (Southampton Oceanographic Centre) for the valuable advice during the preparation of this paper. I thank O.S. Tendal (Zoological Museum of Copenhagen) for commenting an early version of manuscript. Many thanks to E.A. Zhegallo and L.T. Protasevich (Paleontological Institute of Russian Academy of Sciences) for assistance with electron microscopy. This study was supported by the Volkswagen Foundation (grant 1/73638) and Russian Foundation for Basic Research (grant 02–04–49195).

**Literature**

- Gooday A.J. 1991. Xenophyophores (Protista, Rhizopoda) in box-core samples from the abyssal northeast Atlantic Ocean (BIOTRANS area): their taxonomy, morphology, and ecology // *Journal of Foraminiferal Research*. Vol.21. P.197–212.
- Gooday A.J. 1996. Xenophyophores (Protista) including two new species, from two abyssal sites in the northeast Atlantic Ocean // *Journal of Foraminiferal Research*. Vol.26. P.193–208.
- Gooday A.J., Tendal O.S. 1988. New xenophyophores (Protista) from the bathyal and abyssal north-east Atlantic Ocean // *Journal of National History*. London. Vol.22. P.413–434.
- Gooday A.J., Tendal O.S. 2000. Class Xenophyophorea (Phylum Granuloreticulosea) // J.J. Lee, G. Leedale (eds.). *Illustrated Guide to the Protozoa*. Allen Press. P.1086–1097.
- Haeckel E. 1889. Report on the Deep-Sea Keratosa collected by H.M.S. “Challenger” during the years 1873–76 // *Voyage of H.M.S. Challenger, Zoology*. Vol.32. P.1–92.
- Kamenskaya O.E. 1987. Xenophyophores and komokiaceans in the trophic chains of the deep-sea benthos // A.P. Kuznetsov, M.N. Sokolova (eds.) *Feeding of marine invertebrates and its significance in formation of communities*. Moscow: IOAN. P.15–21 [in Russian].
- Kamenskaya O.E. 1988. Quantitative distribution of komokiaceans and xenophyophores in the southern Atlantic // A.P. Kuznetsov, M.N. Sokolova (eds.) *Structural and functional studies of the marine benthos*. Moscow: IOAN. P.15–19 [in Russian].



**Fig. 2.** EDS elemental analysis of a single crystal in dried cytoplasm of *Spiculammina delicata* gen. et sp. n.

The peaks show the main constituents to be barium (Ba). Absorbent peak of sulphur (S from  $\text{SO}_4$ ) covered with peak of Au.

**Рис. 2.** Состав элементов в одном кристалле из сухой цитоплазмы *Spiculammina delicata* gen. et sp. n.

Пики показывают высокую концентрацию бария. Абсорбционный пик серы совпадает с пиком золота.

Kamenskaya O.E. 1998. Xenophyophores from the 16<sup>th</sup> cruise of R/V "Dmitry Mendeleev". 1. New species of the genus *Reticulammina* // A.P. Kuznetsov, O.N. Zezina (eds.). Benthos of the high latitude regions. Moscow: VNIRO. P.121–124 [In Russian].

Kamenskaya O.E. 2000. Xenophyophores (Protista, Xenophyophorea) from the 16<sup>th</sup> cruise of R/V "Dmitry Mendeleev". 2. *Lobammina rigida* gen. et sp. nov. from the Coral Sea // A.P. Kuznetsov, O.N. Zezina (eds.). Benthos of the Russian Seas and the Northern Atlantic. Moscow: VNIRO. P.102–106 [in Russian].

Kamenskaya O.E., Saidova Kh.M. 1998. Redescription of *Psammia planata* (Saidova, 1979), a hadal xenophyophore from the Kurile-Kamchatka Trench // A.P. Kuznetsov, O.N. Zezina (eds.). Benthos of high latitude regions. Moscow: VNIRO. P.125–128 [in Russian].

Laubenfels M.V. de. 1936. Sponge fauna of the Dry Tortugas // Papers of Tortugas Laboratory. Vol.30. P.1–225.

Levin L.A., Thomas C.L. 1988. The ecology of xenophyophores (Protista) on eastern Pacific seamounts // Deep-Sea Research. Vol.35. P.2003–2027.

Riemann F., Tendal O.S., Gingle F.X. 1993. *Reticulammina antarctica* nov. spec. (Xenophyophoria, Protista) from the Weddell Sea, and aspects of the nutrition of xenophyophores // Polar Biology. Vol.13. P.543–547.

Schulze F.E. 1904. Über den Bau und die Entwicklung gewisser Tiefsee-Organismen // Sitz.-Ber. preuss. Akad. Wiss. Bd.53. S.1387.

Soetaert K., Heip C., Vincx M. 1991. The meiobenthos along a Mediterranean deep-sea transect off Calvi (Corsica) and in an adjacent canyon // P.S.Z.N.I. Marine Ecology. Vol.12. P.227–242.

Tendal O.S. 1972. A monograph of the Xenophyophoria (Rhizopodea, Protozoa) // Galathea Report. Vol.12. P.7–99.

Tendal O.S. 1975. A new xenophyophore, living on solid substratum and its significance // Deep-Sea Research. Vol.22. P.45–48.

Tendal O.S. 1994. Protozoa Xenophyophorea Granuloreticulosa: *Psammia zonaria* sp. nov. from the West Pacific and some aspects of the growth of xenophyophores // A. Crosnier (ed.). Résultats des Campagnes MUSORSTOM. Mémoires du Muséum National d'Histoire naturelle. Vol.161. P.49–54.

Tendal O.S. 1996. Synoptic checklist and bibliography of the Xenophyophorea (Protista) with a zoogeographical survey of the group // Galathea Report. Vol.17. P.79–101.

Tendal O.S., Gooday A.J. 1981. Xenophyophoria (Rhizopodea, Protozoa) in bottom photographs from bathyal and abyssal NE Atlantic // Oceanological Acta. Vol.4. P.415–422.

Tendal O.S., Lewis K.B. 1978. New Zealand xenophyophores: upper bathyal distribution, photographs of growth position, and a new species. N.Z. // Journal of Marine and Freshwater Research. Vol.12. No.12. P.197–203.