

A contribution to the millipede fauna of Siberia (Diplopoda)

К изучению фауны двупарноногих многоножек Сибири (Diplopoda)

E. V. Mikhailjova* & P. S. Nefediev**
Е. В. Михалёва*, П. С. Нефедьев**

* Institute of Biology and Soil Science, Far Eastern Branch of the Russian Academy of Sciences, prospekt 100-letiya 159, Vladivostok 690022 Russia.

** State University of Tomsk, prospekt Lenina 36, Tomsk 634050 Russia.

* Биолого-почвенный институт ДВО РАН, проспект Столетия 159, Владивосток 690022 Россия.

** Томский государственный университет, проспект Ленина 36, Томск 634050 Россия.

KEY WORDS: Diplopoda, faunistics, variation, Siberia, Russia.

КЛЮЧЕВЫЕ СЛОВА: Diplopoda, фаунистика, изменчивость, Сибирь, Россия.

ABSTRACT: A collection of Diplopoda from West and Southwest Siberia appears to contain 16 identifiable species from 12 genera and 7 families. The species *Polydesmus denticulatus* C. L. Koch, 1847 as well as the genus *Polydesmus* Latreille, 1802/03 are new to the fauna of the Asian part of Russia. The ubiquitous species *Nopoiulus kochii* (Gervais, 1847), the genus *Nopoiulus* Menge, 1851, as well as the family Blaniulidae are recorded in Siberia for the first time. Remarks are provided for all species encountered, including notes on the variation of *Sibiriulus multinicus* Mikhailjova, 2001. New faunistic records are presented.

РЕЗЮМЕ: Коллекция Diplopoda из западной и юго-западной Сибири насчитывает 16 видов из 12 родов и 7 семейств. Вид *Polydesmus denticulatus* C. L. Koch, 1847 и род *Polydesmus* Latreille, 1802/03 являются новыми для фауны азиатской части России. Вид-убиквист *Nopoiulus kochii* (Gervais, 1847), род *Nopoiulus* Menge, 1851 и семейство Blaniulidae впервые зарегистрированы в Сибири. Для всех видов даны замечания, в т.ч. сведения об изменчивости *Sibiriulus multinicus* Mikhailjova, 2001. Приведены новые фаунистические находки.

Introduction

This publication continues the study of the millipede fauna of Siberia, an extremely vast region where several large lacunae have hitherto remained nearly or fully untouched by a collecting effort. At present, the main information on the state of the art can be obtained from two regional reviews [Mikhailjova, 1993; Mikhailjova & Golovatch, 2001] as well as very recent publications concerning several poorly-known Siberian species [Mikhailjova, 2002] and some peculiarities of the ecology of Southwest Siberian Diplopoda [Nefediev, 2001, 2002a, b, c, d].

In the faunistic accounts below, most of the locality names and numbers (shown in square brackets) correspond to those on Map.

Materials treated herein have been collected by A.S. Babenko (A.B.) (Tomsk), I.Yu. Bordovitsina (I.B.) (Tomsk), Yu.A. Chikin (Yu. Ch.) (Tomsk), D.A. Efimov (D. E.) (Kemerovo), O. G. Gorbunov (O.G.) (Moscow), I. Martynenko (I.M.) (Tomsk), A.V. Matalin (A.M.) (Moscow), Yu.S. Nefedeva (Yu.N.) (Tomsk), R.V. Senotrusov (R.S.) (Tomsk), A.N. Tchemeris (A.Tch.) (Tomsk), E. Varushkina (E.V.) (Tomsk), A.V. Udalay (A.U.) (Tomsk) as well as by the second author (P.N.). These samples have been shared with the collections of the following institutions: State University of Tomsk (SUT), Institute of Biology and Soil Science, Far Eastern Branch of the Russian Academy of Sciences, Vladivostok (IBSV), Siberian Zoological Museum, Novosibirsk (ZMN), and Zoological Museum of the State University of Moscow (ZMUM). One more abbreviation is accepted here: s.l. — same locality.

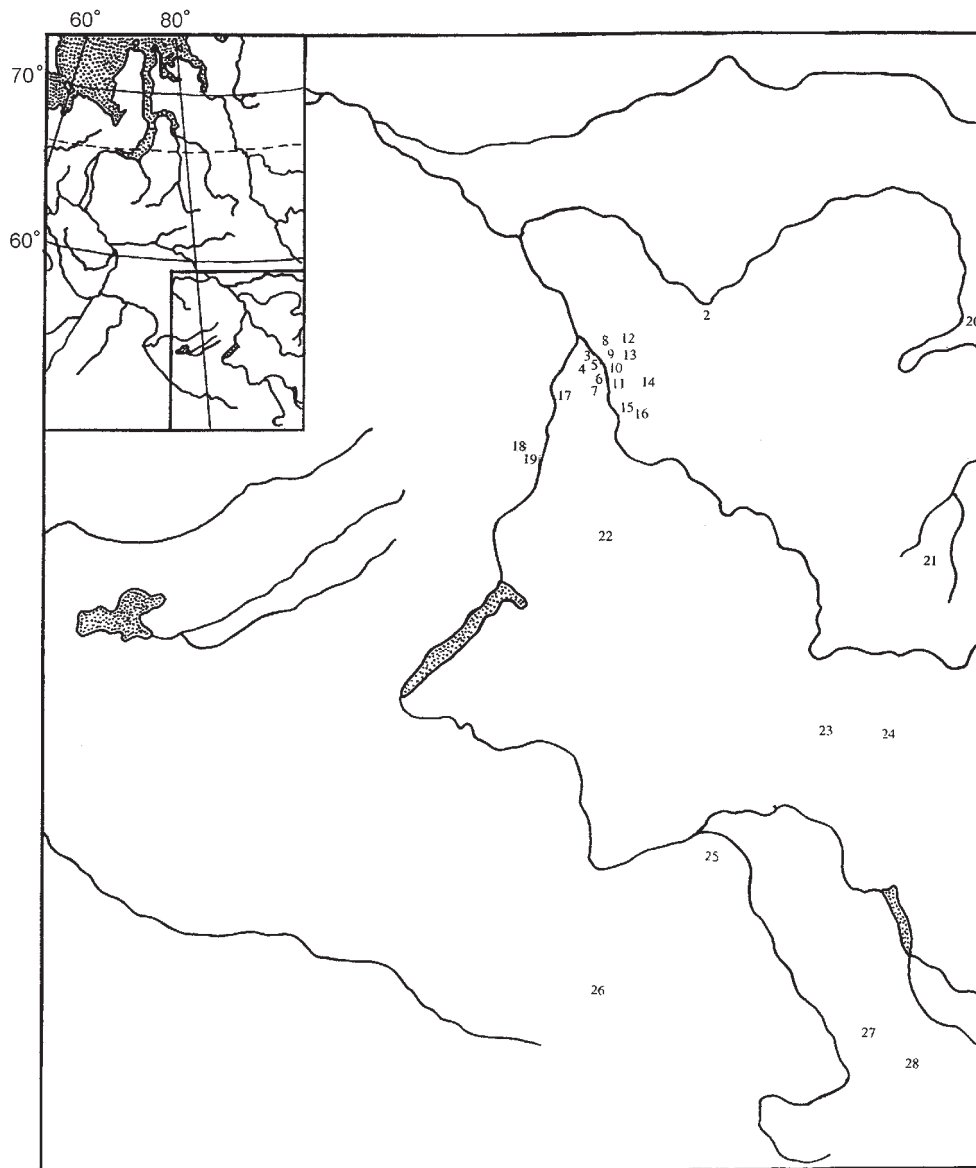
Faunistic part

POLYDESMIDA

Polydesmidae

Schizoturanius clavatipes (Stuxberg, 1876)

MATERIAL: 3 ♂♂, 5 ♀♀, 32 juv. (SUT), Russia, Siberia, Novosibirsk Area, near Kotorovo [22], *Populus tremula* stand, on glade and in pitfall traps, 14–23.VII.1988. — 9 juv. (SUT), s.l., 3–12.VIII.1988. — 4 ♀♀, 7 juv. (SUT), s.l., *Abies* forest, pitfall traps, 14–23.VII.1988; all leg. I.B. & E.V. — 2 ♀♀, 5 juv. (SUT), s.l., 18.VII.1988; leg. I. M. — 1 juv. (SUT), Tomsk Area, 24 km N of Tomsk [8], *Populus tremula* stand, glades, rotten trunks, 18.VI.1999; leg. A.U. — 2 ♂♂ (SUT), s.l., *Abies sibirica* & *Populus tremula* forest, 11.VI.2000; leg. P.N. — 1 ♀, 7 juv. (SUT), same Area, near Timiryazevskoe [5], flood-plains of Tom River, Burunduk Channel, *Salix* thicket, 27.VI.1999. — 2 ♂♂, 1 ♀, 3 juv. (SUT), s.l., mixed herbaceous meadow, 27.VI.1999; all leg. A.U. — 1 ♂ (SUT), same Area, near Yarskoe [15], *Salix* thicket, first stream, 3.IX.1999. — 1 fragm. (SUT), s.l., Petrov Kamen, lower part of talus, *Salix* thicket, under stones 3.IX.1999. — 2 ♂♂, 2 ♀♀ (SUT), s.l., leaved forest, gully with stream, 3.IX.1999. — 1 ♂ (SUT), same



Map. Main localities: TOMSK AREA: 1 — Verkhneketsky Distr., Yagodninskoe Forestry; 2 — Zyryanskoe Distr., near Zyryanskoe; 3 — Tomsk Distr., near Boriki; 4 — Tomsk Distr., near Beriozkiino; 5 — Tomsk Distr., near Timiryazevskoe; 6 — Tomsk Distr., near Kislovka; 7 — Tomsk Distr., near Kandinka; 8 — Tomsk Distr., 24 km N of Tomsk; 9 — Tomsk City; 10 — Tomsk Distr., near Zonalnyi; 11 — Tomsk Distr., near Anikino; 12 — Tomsk Distr., near Molodiozhnyi; 13 — Tomsk Distr., near Lyazgino; 14 — Tomsk Distr., 41st railway-km from Tomsk to Taiga; 15 — Tomsk Distr., near Yarskoe; 16 — KEMEROVO AREA, Yashkino Distr., near Kosogorovo; TOMSK AREA: 17 — Kozhevnikovo Distr., near Kireyevsk; 18 — Kozhevnikovo Distr., near Bazoy; 19 — Kozhevnikovo Distr., near Baturino; 20 — KRASNOYARSK PROV., Achinsk Distr., near Tarutino; 21 — REPUBLIC OF KHAKASSIA, Shira Distr., near Kommunar; 22 — NOVOSIBIRSK AREA, Toguchin Distr., near Kotorovo; KEMEROVO AREA: 23 — Novokuznetsk Distr., near Kuzedeyevo; 24 — Shorsky Mt. Range, Mt. Mustag; ALTAI PROV.: 25 — Smolenskoe Distr., near Smolenskoe; 26 — Krasnoshchiokovo Distr., near Tigirek; 27 — CENTRAL ALTAI, Aigulaksky Mt. Range; 28 — ALTAI REPUBLIC, near Aktash.

Карта. Основные места сбора материала: ТОМСКАЯ ОБЛ.: 1 — Верхнекетский р-н, Ягоднинское лесничество; 2 — Зырянский р-н, возле с. Зырянское; 3 — Томский р-н, возле п. Борики; 4 — Томский р-н, возле с. Берёзкино; 5 — Томский р-н, возле с. Тимирязевское; 6 — Томский р-н, возле с. Кисловка; 7 — Томский р-н, возле д. Кандинка; 8 — Томский р-н, 24 км севернее Томска; 9 — Томск; 10 — Томский р-н, возле п. Зональный; 11 — Томский р-н, возле п. Аникино; 12 — Томский р-н, возле п. Молодёжный; 13 — Томский р-н, возле д. Лязгино; 14 — Томский р-н, 41 км железной дороги от Томска до г. Тайга; 15 — Томский р-н, возле с. Ярское; 16 — КЕМЕРОВСКАЯ ОБЛ., Яшкинский р-н, возле п. Косогорова; ТОМСКАЯ ОБЛ.: 17 — Кожевниковский р-н, возле с. Киреевск; 18 — Кожевниковский р-н, возле с. Базой; 19 — Кожевниковский р-н, возле с. Батурино; 20 — КРАСНОЯРСКИЙ КРАЙ, Ачинский р-н, возле п. Тарутино; 21 — РЕСПУБЛИКА ХАКАСИЯ, Ширинский р-н, возле п. Коммунар; 22 — НОВОСИБИРСКАЯ ОБЛ., Тогучинский р-н, возле с. Которово; КЕМЕРОВСКАЯ ОБЛ.: 23 — Новокузнецкий р-н, возле с. Кузедеево; 24 — Шорский горный хребет, гора Мустаг; АЛТАЙСКИЙ КРАЙ: 25 — Смоленский р-н, возле с. Смоленское; 26 — Краснощёковский р-н, возле с. Тигирек; 27 — ЦЕНТРАЛЬНЫЙ АЛТАЙ, Айгулакский горный хребет; 28 — РЕСПУБЛИКА АЛТАЙ, возле с. Акташ.

Area, near Molodiozhnyi [12], potato field, 8.IX.1999. — 3 ♂♂, 3 ♀♀, 1 juv. (SUT), s.l., *Populus tremula* & *Betula* forest strip along road, 8.IX.1999. — 1 ♂ (SUT), s.l., 4.VI.2000. — 1 ♂, 5 ♀♀, 3 juv. (SUT), same Area, near Beriozkino [4], *Populus tremula* stand on slope, near pond, 28.IX.1999; all leg. P.N. — 1 ♂ (SUT), same Area, near Kandinka [7], *Pinus* & *Betula* forest on swamp, litter, 4.VI.2000; leg. A.U. — 3 ♂♂, 3 ♀♀ (SUT), same Area, environs of Tomsk, mixed forest, 11.VI.2000; leg. P.N. — 1 ♀ (SUT), same Area, 41st railway-km from Tomsk to Taiga [14], *Populus* & *Abies* stand, litter, 3.IX.2000. — 3 ♂♂, 1 ♀ (SUT), same Area, near Zyrjanskoe [2], *Populus tremula* & *Pinus silvestris* grove, 7.IX.1999; all leg. A.U. — 1 ♂ (SUT), Tomsk [9], Irkutsky highway, grass, 19.IX.1999. — 1 ♀ (SUT), Khakassian Republic, near Kommunar [21], ca. 4 km upstream of Bolnichnyi Stream, *Salix* thicket, under stones, 30.VII.1999. — 5 juv. (SUT), s.l., *Betula* stand, 31.VII.1999. — 1 ♀, 2 juv. (SUT), s.l., mixed forest, 1.VIII.1999; all leg. P.N. — 1 ♂, 1 ♀, 8 juv. (SUT), s.l., ca. 2–4 km upstream of Bolnichnyi Stream, *Betula* & *Abies* forest, 2.VIII.1999; leg. A.U. & P.N. — 2 ♀♀ (SUT), Krasnoyarsk Prov., near Tarutino [20], *Betula*, *Populus tremula* & *Pinus silvestris* grove, 19.IX.2000. — 20 ♂♂, 24 ♀♀, 9 juv., s.l., meadow and *Betula* stand near railway station, 19.IX.2000; all leg. P.N. — 1 ♀ (SUT), Altai Prov., near Tigirek [26], lower reaches of Malyi Tigirek River, *Abies-Betula-Populus tremula* forest, 16.VI.2000; leg. A.Tch. — 18 ♂♂, 11 ♀♀ (SUT), same Prov., near Smolenskoe [25], bank of Poperechka River, *Salix* stand, 27.VIII.2000. — 3 ♂♂, 2 ♀♀, 3 juv. (SUT), Kemerovo Area, near Kuzedeyevo [23], right bank of Malyi Tiosh River, *Tilia* insular forest (= "Lipovyi ostrov"), near apiary, 9.VIII.2000. — 4 ♂♂, 3 ♀♀, 1 juv. (SUT), s.l., environs of Malyi Tiosh River, grassland along road, 9.VIII.2000. — 1 juv. (SUT), s.l., *Tilia* insular forest (= "Lipovyi ostrov"), under bark and moss on tree, 10.VIII.2000. — 2 ♂♂, 1 ♀, 2 juv. (SUT), s.l., left bank of Malyi Tiosh River, mixed forest, 10.VIII.2000; all leg. P.N. — 1 juv. (SUT), s.l., left bank of Malyi Tiosh River, *Betula* & *Populus* stand, 10.VIII.2000; leg. A.U. — 2 juv. (SUT), s.l., *Tilia* forest on hill top, 12.VIII.2000. — 1 ♂, 2 ♀♀, 1 fragm. (SUT), same Area, near Kosogorovo [16], *Populus* & *Betula* stand, on mushrooms, 15.VIII.2000. — 1 ♀ (SUT), s.l., 17–18.VIII.2000; all leg. P.N.

REMARKS: This species is known to be rather widespread in Salair Mts., Kuznetsky Alatau Mts., Altai Mts., and Gornaya Shoriya [Mikhailjova & Golovatch, 2001]. Some of the above samples from the Tomsk Area and Altai Prov. (near Smolenskoe) have already been incorporated into fresh publications [Nefediev, 2001, 2002c, d], though without proper faunistic record.

Schizoturanus salairicus (Gulička, 1963)

MATERIAL: 2 ♀♀, 1 juv. (SUT), **Russia, Siberia**, Novosibirsk Area, near Kotorovo [22], *Populus tremula* stand, pitfall traps, 14–23.VII.1988. — 1 ♀ (SUT), s.l., *Abies* forest, pitfall traps, 14–23.VII.1988; all leg. I.B. — 1 ♀, 1 fragm. (SUT), s.l., 18.VII.1988, leg. I.M. — 1 ♀ (SUT), Tomsk Area, near Bazoy [18], environs of Lake Shubino, swamp, *Populus tremula* stand, lower terrace, 4.V.1999. — 4 ♀♀, 6 juv. (SUT), same Area, near Kireyevsk [17], Biological Research Station of Tomsk State University, mixed herbaceous meadow, 2.VII.1999. — 2 juv. (SUT), s.l., Ob River, large island, *Populus tremula* stand, 2.VII.1999; all leg. P.N. — 6 ♀♀, 1 juv. (SUT), same Area, 24 km N of Tomsk [8], *Populus tremula* stand, glades, litter, rodent trap ditches, 18.VI.1999; leg. A.U. — 2 ♀♀ (SUT), s.l., 11.VI.2000; leg. P.N. — 1 juv. (SUT), same Area, near Anikino [11], Basandaika River, gully with stream, *Betula* & *Populus tremula* stand, 25.VI.1999. — 2 juv. (SUT), s.l., flood-plains of Tom River, *Salix* grove with bird-cherry and *Populus*, 31.VIII.2000. — 8 ♀♀, 20 juv. (SUT), same Area, near Timiryazevskoe [5], Burunduk Channel, *Salix* grove, 27.VI.1999. — 1 juv. (SUT), s.l., flood-plains of Tom River, mixed herbaceous meadow, 27.VI.1999; all leg. A.U. — 5 juv. (SUT), same Area, near Lyazgino [13], mixed coniferous forest, 20.VII.1999. — 1 ♀, 1 juv. (SUT), same Area, near Boriki [3], Mazikha Channel, *Abies* forest, 21.VIII.1999. — 1 fragm. (SUT), s.l., Mazikha Channel, *Salix* grove, 21.VIII.1999. — 1 fragm. (SUT), same Area, near Yarskoe [15], first stream, *Salix* grove, 3.IX.1999. — 27 juv. (SUT), s.l., Tom

River bank, *Betula* stand, 3.IX.1999. — 1 fragm. (SUT), s.l., Petrov Kamen, lower part of talus, *Salix* thicket, under stones, 3.IX.1999. — 9 ♂♂, 8 ♀♀, 12 juv. (SUT), same Area, near Molodiozhnyi [12], *Populus tremula* & *Betula* forest strip along road, 8.IX.1999. — 1 juv. (SUT), same Area, near Beriozkino [4], *Populus tremula* stand, slope, near pond, 28.IX.1999. — 1 ♀ (SUT), same Area, environs of Tomsk, mixed forest, 11.VI.2000; all leg. P.N. — 1 ♂ (SUT), same Area, 41st railway-km from Tomsk to Taiga [14], *Abies* forest with *Populus*, litter, 3.IX.2000. — 3 ♀♀, 8 juv. (SUT), same Area, near Zyrjanskoe [2], *Populus tremula* & *Betula* forest strip along road, 7.IX.1999. — 8 ♀♀ (SUT), s.l., *Pinus silvestris* forest with *Populus tremula* 7.IX.1999; all leg. A.U. — 9 juv. (SUT), Tomsk [9], Irkutsky highway, *Betula* stand, glade, 20.VII.1999. — 1 juv. (SUT), s.l., Universitetskaya Roshcha, 19.IV.2000. — 5 juv. (SUT), Khakassian Republic, near Kommunar [21], ca. 4 km upstream of Bolnichnyi Stream, *Betula* stand, 31.VII.1999. — 6 juv. (SUT), s.l., *Betula* & *Larix* grove, hill top, 31.VII.1999. — 1 ♂, 1 ♀ (IBSV), 4 ♀♀, 3 juv. (SUT), s.l., 1.VIII.1999. — 14 juv. (SUT), s.l., *Populus tremula* & *Betula* stand, 1.VIII.1999. — 2 ♀♀, 21 juv. (SUT), s.l., ca. 2 km upstream of Bolnichnyi Stream, *Abies* & *Betula* forest, 2.VIII.1999. — 2 juv., 1 fragm. (SUT), s.l., *Abies* forest, 2.VIII.1999. — 6 juv. (SUT), Kemerovo Area, near Kuzedeyevo [23], right bank of Malyi Tiosh River, *Tilia* insular forest (= "Lipovyi ostrov"), near apiary, 9.VIII.2000. — 1 ♀ (SUT), s.l., pitfall traps, 9–10.VIII.2000. — 3 juv. (SUT), s.l., under bark and moss on tree, 10.VIII.2000. — 5 juv. (SUT), s.l., mixed forest, 10.VIII.2000. — 2 juv. (SUT), s.l., *Tilia* forest on hill top, 12.VIII.2000; all leg. P.N.

REMARKS: This species, originally described from near Prokopievsk, Kemerovo Area [Gulička, 1963], appears to be widespread in Southwest Siberia [Mikhailjova & Golovatch, 2001; Nefediev, 2001, 2002a, b, c, d]. Some of above samples from the Tomsk and Kemerovo areas (near Kuzedeyevo) and the Altai Province (near Smolenskoe) have already been incorporated into several fresh publications of Nefediev [2001, 2002b, c, d], though without proper faunistic record.

Polydesmus denticulatus C. L. Koch, 1847

MATERIAL: 1 ♀ (SUT), **Russia, Siberia**, Tomsk [9], Universitetskaya Roshcha, *Betula* stand, 19.IV.2000. — 6 ♂♂, 5 ♀♀, 10 juv. (SUT), s.l., 23.IV.2002; all leg. P.N. & Yu.N.

REMARKS: An eurytropic species widely distributed over Europe. It is often found in habitats associated with human activity. This is the first formal record of the genus *Polydesmus* Latreille, 1802/03 as well as of this species in the Asian part of Russia.

Paradoxosomatidae

Oxidus gracilis (C. L. Koch, 1847)

MATERIAL: 1 ♀, 28 juv. (SUT), **Russia, Siberia**, Tomsk [9], Siberian Botanical Garden, warm greenhouse, 10.XII.1999. — 3 ♂♂, 6 ♀♀, 44 juv. (SUT), 1 ♂, 1 ♀ (ZMN), s.l., 3.III.2000. — 4 ♂♂, 3 ♀♀ (SUT), s.l., greenhouses 1 and 2 (warm and cold, respectively), 21.VI.2000; all leg. P.N.

REMARKS: In Russia, this ubiquitous species of East Asian origins has only been reported in green- or hothouses.

JULIDA

Nemasomatidae

Orinisobates sibiricus (Gulička, 1963)

MATERIAL: 1 ♀ (SUT), **Russia, Siberia**, Khakassian Republic, near Kommunar [21], ca. 4 km upstream of Bolnichnyi Stream, mixed forest, 1.VIII.1999. — 1 ♀ (SUT), s.l., *Populus tremula* & *Betula* stand, 1.VIII.1999. — 15 ♂♂, 23 ♀♀, 9 juv. (SUT), 1 ♂, 1 ♀ (IBSV), 1 ♂, 1 ♀ (ZMN), s.l., ca. 2 km upstream of Bolnichnyi Stream, *Abies* & *Betula* forest, 2.VIII.1999. — 1 ♂, 3 ♀♀ (SUT), s.l., *Abies* forest, 2.VIII.1999. — 1 ♂ (SUT), Kemerovo Area, near

Kuzedeyevo [23], *Tilia* insular forest (= "Lipovyi ostrov"), pitfall traps, near apiary, 9–10.VIII.2000. — 5 ♂♂, 10 ♀♀ (SUT), s.l., Malyy Tiosh River, *Tilia* insular forest (= "Lipovyi ostrov"), near apiary, under moss and bark on tree, 10.VIII.2000. — 1 ♀ (SUT), s.l., right bank of Malyy Tiosh River, mixed forest, near apiary, 10.VIII.2000. — 2 ♂♂, 5 ♀♀ (SUT), s.l., *Tilia* forest on hill top, 12.VIII.2000; all leg. P.N.

REMARKS: This species is quite widespread in Siberia (southern part of Krasnoyarsk Province, Altai, Kemerovo Area, Chita Area, Republic of Tuva) as well as in eastern Kazakhstan and in Kirghizia [Mikhailjova & Golovatch, 2001]. Very likely, it also occurs in the adjacent part of Mongolia and China.

Julidae

Pacifiulus amurensis (Gerstfeldt, 1859)

MATERIAL: 1 ♀ (SUT), **Russia, Siberia**, Khakassian Republic, near Kommunar [21], ca. 4 km upstream of Bolnichnyi Stream, *Salix*, under stones, 30.VII.1999. — 7 juv. (SUT), s.l., *Betula* stand, 31.VII.1999. — 1 ♂, 3 ♀♀, 1 juv. (SUT), s.l., *Larix* & *Betula* forest, hill top, 31.VII.1999. — 1 ♂, 2 ♀♀, 1 juv. (SUT), s.l., 1.VIII.1999. — 1 ♂, 2 ♀♀, 3 juv. (SUT), s.l., *Populus tremula* & *Betula* stand, 1.VIII.1999; all leg. P.N. — 4 ♂♂, 2 ♀♀, 5 juv. (SUT), s.l., honeysuckle and red currants thicket, 2.VIII.1999, leg. A.U. — 2 ♀♀ (SUT), s.l., ca. 2 km upstream of Bolnichnyi Stream, *Abies* & *Betula* forest, 2.VIII.1999; leg. P.N. — 4 ♀♀ (ZMUM), Altai Mts., Kuraisky Mt. Range, near Aktash [28], 2500 m a.s.l., *Betula nana* + mountain tundra, under stones, 12–25.VII.2000; leg. O.G.

REMARKS: This species is known from Siberia and the Russian Far East [Mikhailjova, 1998a]. In Siberia, it has been reported from the Republic of Tuva, the eastern part of Altai Republic and the southern part of Krasnoyarsk Province [Mikhailjova & Golovatch, 2001]. The northern range limit in Siberia seems to lie at Kommunar, Shira Distr., Khakassian Republic.

In Siberia, all known populations seem bisexual while in the Far East only parthenogenetic.

Julus ghilarovi Gulička, 1963

MATERIAL: 1 ♀ (SUT), **Russia, Siberia**, Novosibirsk Area, near Kotorovo [22], *Populus tremula* stand, 18.VII.1988, leg. A.B. — 2 ♂♂, 2 juv. (SUT), s.l., 18.VII.1988, leg. I.B. — 3 ♂♂, 5 ♀♀, 8 juv. (SUT), Khakassian Republic, near Kommunar [21], ca. 2 km upstream of Bolnichnyi Stream, lower part of talus, under stones and moss, 30.VII.1999. — 3 ♂♂, 10 ♀♀, 15 juv. (SUT), s.l., ca. 2 km upstream of Bolnichnyi Stream, *Betula* & *Abies* stand, 2.VIII.1999. — 2 ♂♂, 6 ♀♀, 2 juv. (SUT), s.l., *Abies* forest, 2.VIII.1999. — 1 ♂, 3 ♀♀, 4 juv. (SUT), same Republic, near Kommunar [21], ca. 4 km upstream of Bolnichnyi Stream, *Betula* & *Larix* grove, hill top, 1.VIII.1999. — 3 ♂♂, 10 ♀♀, 12 juv. (SUT), 1 ♂, 1 ♀ (ZMN), s.l., 1.VIII.1999. — 2 ♀♀, 7 juv. (SUT), s.l., *Populus tremula* & *Betula* stand, 1.VIII.1999; all leg. P.N. — 1 ♂, 2 ♀♀, 1 juv. (SUT), s.l., honeysuckle and red currants thicket, 2.VIII.1999, leg. A.U. — 2 ♀♀ (SUT), Altai Prov., near Tigirek [26], upper reaches of Malyy Tigirek River, N slope of Tigirek Mt. Range, litter, under stones, 19.VI.2000. — 1 ♂, 1 ♀, 4 juv. (SUT), s.l., lower reaches of Malyy Tigirek River, *Abies* & *Betula* forest, 17.VI.2000; all leg. A.Tch. — 10 ♀♀ (ZMUM), Altai Mts., Kuraisky Mt. Range, near Aktash [28], 2500 m a.s.l., *Betula nana* + mountain tundra, under stones, 12–25.VII.2000; leg. O.G. — 2 ♂♂, 2 ♀♀ (SUT), Kemerovo Area, Gornaya Shoriya, Mt. Mustag, [24], 1450–1500 m a.s.l., alpine meadows, under stones, 15.VII.2000; leg. D.E. — 12 ♀♀, 2 juv. (SUT), same Area, near Kuzedeyevo [23], right bank of Malyy Tiosh River, *Tilia* insular forest (= "Lipovyi ostrov"), near apiary, 9.VIII.2000; leg. P.N. — 1 ♂ (SUT), s.l., 11.VIII.2000; leg. A.U. — 1 juv. (SUT), s.l., Malyy Tiosh River, *Tilia* insular forest (= "Lipovyi ostrov"), near apiary, under moss and bark on tree, 10.VIII.2000. — 1 ♂ (SUT), s.l., Malyy Tiosh River, grassland along road, 9.VIII.2000. — 1 ♀ (SUT), s.l., Malyy Tiosh

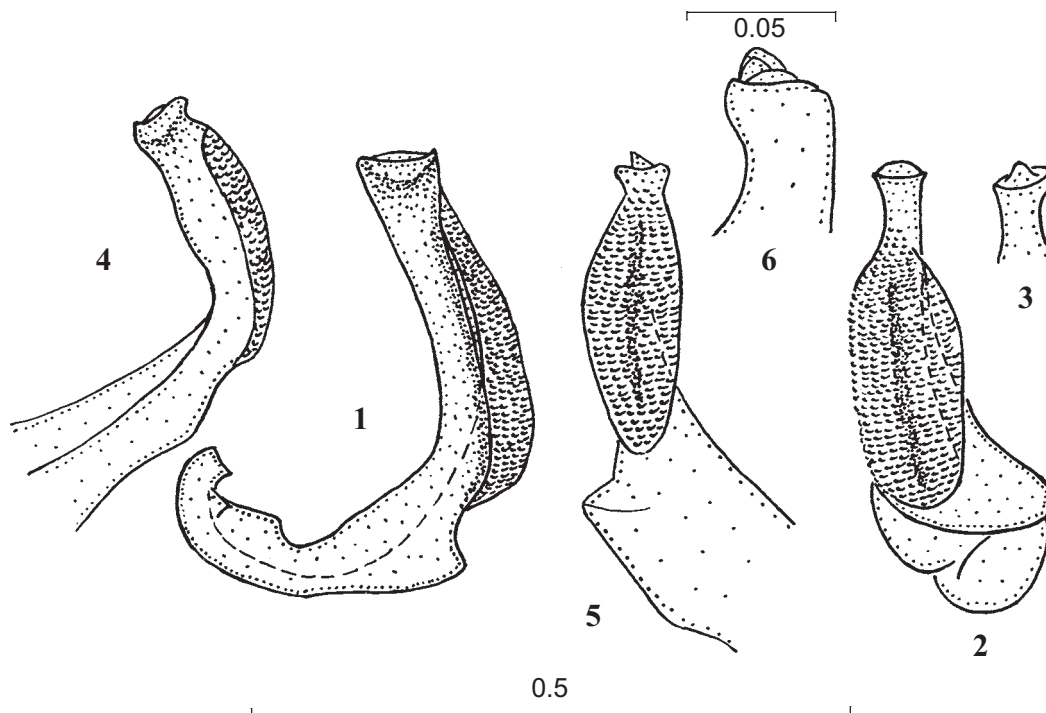
River, glade, in tent, 8.VIII.2000; all leg. P.N. — 2 ♀♀, 1 juv. (SUT), s.l., right bank of Malyy Tiosh River, *Betula* & *Populus* stand, 10.VIII.2000; leg. A.U. — 1 ♂, 1 juv. (SUT), s.l., *Betula* stand, near glade, pitfall traps, 11–12.VIII.2000. — 1 ♂, 3 ♀♀, 6 juv. (SUT), s.l., *Tilia* forest on hill top, 12.VIII.2000; all leg. P.N.

REMARKS: This species, comprising two subspecies, is widespread in Southwest Siberia covering the Kemerovo and Novosibirsk areas, the southern part of Krasnoyarsk Province, the Khakassian Republic and the Altai [Mikhailjova & Golovatch, 2001; Nefediev, 2002b]. The samples from Kemerovo Area (near Kuzedeyevo) have already been incorporated into an earlier publication of Nefediev [2002b], though without proper faunistic record.

Sibirius profugus (Stuxberg, 1876)

MATERIAL: 16 ♂♂, 43 ♀♀, 21 juv., 2 fragm. (SUT), **Russia, Siberia**, Novosibirsk Area, near Kotorovo [22], *Populus tremula* stand, pitfall traps, 14–23.VII.1988. — 3 ♂♂, 7 ♀♀, 19 juv. (SUT), s.l., 3–12.VIII.1988; all leg. I.B. — 9 ♂♂, 11 ♀♀, 4 juv., 2 fragm. (SUT), s.l., *Abies* forest, pitfall traps, 14–23.VII.1988; leg. I.B. & E.V. — 6 ♂♂, 5 ♀♀, 4 juv. (SUT), s.l., 18.VII.1988, leg. I.M. — 1 ♀, 1 juv. (SUT), Tomsk Area, Yagodninskoe Forestry [1], *Abies*, *Populus tremula*, *Picea* & *Betula* stand, 9.IX.1998. — 1 juv. (SUT), same Area, near Bazoy [18], Lake Shubino, upper terrace, *Betula* stand, 2.V.1999. — 5 ♂♂, 4 ♀♀, 11 juv. (SUT), s.l., swampy *Populus tremula* stand, lower terrace, 4.V.1999. — 1 ♂, 2 ♀♀, 1 juv. (IBSV), s.l., *Betula* & *Populus tremula* stand on slope, 27.IX.1999. — 1 ♂, 4 ♀♀, 9 juv. (SUT), same Area, near Baturino [19], Lake Liniovo, checkpoint No. 1, *Populus tremula* stand, 4.V.1999; all leg. P.N. — 2 ♂♂, 7 ♀♀, 2 juv. (SUT), same Area, 24 km N of Tomsk [8], *Populus tremula* stand, glades, litter, rodent trap ditches, rotten trunks, 18.VI.1999. — 2 ♂♂, 8 ♀♀, 1 juv. (SUT), s.l., *Populus tremula* stand, litter, under bark, 11.VI.2000. — 3 ♂♂, 9 ♀♀, 8 juv. (SUT), s.l., *Abies sibirica* & *Populus tremula* forest, 11.VI.2000; leg. P.N. & A.U. — 9 ♀♀, 7 juv. (SUT), same Area, near Anikino [11], Basandaika River, gully with stream, *Betula* & *Populus tremula* stand, 25.VI.1999. — 1 ♂, 6 ♀♀, 10 juv. (SUT), same Area, near Timiryazevskoe [5], Burunduk Channel, *Salix* grove, 27.VI.1999. — 1 ♀, 2 juv. (SUT), s.l., flood-plains of Tom River, mixed herbaceous meadow, 27.VI.1999; all leg. A.U. — 2 ♂♂, 14 juv. (SUT), 1 ♂, 1 ♀ (ZMN), same Area, near Lyazgino [13], mixed forest, 20.VII.1999. — 1 ♀, 4 juv. (SUT), s.l., III–V.2000. — 1 ♂, 1 juv. (SUT), s.l., *Picea obovata* & *Pinus sibirica* forest, 20.VII.1999. — 1 ♂, 4 ♀♀, 1 juv. (SUT), same Area, near Boriki [3], Mazikha Channel, *Salix*, 21.VIII.1999. — 2 ♂♂, 9 ♀♀, 3 juv. (SUT), same Area, near Yarskoe [15], first stream, *Salix* grove, 3.IX.1999. — 2 ♂♂, 7 ♀♀, 1 juv. (SUT), s.l., Tom River bank, *Betula* stand, 3.IX.1999. — 1 juv. (SUT), s.l., Petrov Kamen, lower part of talus, *Salix* thicket, under stones, 3.IX.1999. — 5 ♀♀, 5 juv. (SUT), s.l., second gully with stream, leaved forest, 3.IX.1999. — 1 ♂, 2 ♀♀, 1 juv. (SUT), s.l., *Betula* & *Populus tremula* stand, 3.IX.1999. — 4 ♂♂, 8 ♀♀, 5 juv., same Area, near Beriozokino [4], *Populus tremula* grove on slope, near pond, 28.IX.1999. — 1 ♂, 2 ♀♀ (SUT), same Area, environs of Tomsk, mixed forest, 11.VI.2000. — 5 ♂♂, 3 ♀♀, 10 juv. (SUT), Tomsk [9], Irkutsky highway, *Betula* stand, glade, 20.VII.1999. — 2 ♀♀ (SUT), Khakassian Republic, near Kommunar [21], ca. 4 km upstream of Bolnichnyi Stream, honeysuckle and red currants thicket, 2.VIII.1999. — 1 ♂, 2 ♀♀, 2 juv. (SUT), s.l., ca. 2 km upstream of Bolnichnyi Stream, *Betula* & *Abies* grove, 2.VIII.1999; all leg. P.N.

REMARKS: This species, originally described by Stuxberg [1876] in *Julus* from between Tomsk and Kansk, Krasnoyarsk Province, Siberia, has very recently [Mikhailjova, 2002] been shown to have a junior synonym, *Cylindroiulus* (*Sibirius*) *dentiger* Gulička, 1963, described from the Kemerovo Area [Gulička, 1963]. *S. profugus* is common and widespread in West and Southwest Siberia. Its distribution covers the Kemerovo and Novosibirsk areas, the southern part of Krasnoyarsk Province and the Khakassian Republic [Mikhailjova, 1993; Mikhailjova & Golovatch, 2001], and the



Figs 1–6. *Sibirulius multiniticus* Mikhaljova, 2001, ♂♂ from the environs of Smolenskoe, Smolenskoe Distr., Altai Prov. (1–3), and the middle flow of Bel'gebash River, Aigulaksky Mt. Range, Central Altai (4–6): 1 & 4 — gonopod opisthomerite (1 — lateral view, 4 — mesal view); 2 & 5 — gonopod mesomerite (front view); 3 & 6 — distal part of gonopod mesomerite (anteroventral view, somewhat twisted to the right). — Scale in mm.

Рис. 1–6. *Sibirulius multiniticus* Mikhaljova, 2001, ♂♂ из окрестностей с. Смоленского (Смоленский район, Алтайский край) (1–3) и среднего течения реки Бельгебаш (Айгулакский хребет, Центральный Алтай) (4–6): 1 и 4 — опистомерит гоноподий (1 — вид сбоку, 4 — вид изнутри); 2 и 5 — мезомерит гоноподий (вид спереди); 3 & 6 — дистальная часть мезомерита гоноподий (вид спереди и снизу, небольшой поворот вправо). — Масштаб в мм.

south-eastern part of Tomsk Area [Nefediev, 2002a, c, d; Mikhaljova, 2002]. The record in the Altai Prov. [Nefediev, 2001] is a misidentification, as the species is actually *Sibirulius multiniticus* Mikhaljova, 2001; its complete faunistic record is given below. Some of the above samples from the Tomsk Area have already been incorporated into very recent publications by Nefediev [2002c, d], though without proper faunistic record.

Sibirulius multiniticus Mikhaljova, 2001

Figs 1–6.

MATERIAL: 1 ♂ (ZMUM), **Russia, Siberia**, Central Altai, Aigulaksky Mt. Range [27], NW slope, middle flow of Bel'gebash River, pebble, 1700 m a.s.l., 2.VII.2000. — 3 ♀♀ (ZMUM), Central Altai, Kyzylart Mt. Range, alpine meadow, 2100–2300 m a.s.l., 16–19.VII.2000; all leg. A.M. — 13 ♂♂, 20 ♀♀, 8 juv., 1 fragm. (SUT), 1 ♂, 1 ♀ (IBSV), 1 ♂, 1 ♀ (ZMUM), Altai Prov., near Smolenskoe [25], Poperechka River, *Salix*, 27.VIII.2000; leg. P.N. — 1 ♂, 4 ♀♀ (SUT), s.l., 31.V.2002; leg. Yu.N.

REMARKS: This species has originally been described from the southeastern part of Altai Mountains [Mikhaljova & Golovatch, 2001]. It appears to be rather variable as regards the gonopod structure. The distal part of the gonopod mesomerite is prolonged, with an apical fovea and a minute knob in specimens from the Smolenskoe Distr., Altai Prov. (Figs 1–3), in contrast to the mesomerite apex without prolongation but with an apical fovea and a minute knob carrying a projection in the specimen from Aigulaksky Mt. Range, Central Altai (Figs 4–6), or a simple apex of the mesomerite

from the *locus typicus* [cf. Mikhaljova & Golovatch, 2001].

Cylindroiulus latestriatus (Curtis, 1845)

MATERIAL: 1 ♂, 3 ♀♀, 5 juv. (SUT), **Russia, Siberia**, Tomsk [9], Siberian Botanical Garden, warm greenhouse, 10.XII.1999. — 8 ♂♂, 28 ♀♀, 31 juv. (SUT), s.l., 3.III.2000. — 10 ♂♂, 16 ♀♀, 4 juv., 7 fragments, (SUT), s.l., cold greenhouse, 10.XII.1999. — 12 ♂♂, 18 ♀♀, 6 juv. (SUT), 1 ♂, 1 ♀ (ZMN), s.l., 3.III.2000; all leg. P.N. — 1 juv. (SUT), s.l., greenhouses of Tomskgorzelenkhoz, 20.VII.2000; leg. Yu.Ch. — 6 ♂♂, 13 ♀♀, 15 juv. (SUT), s.l., Universitetskaya Roshcha, 23.IV.2002, leg. P.N. & Yu.N.

REMARKS: In European Russia, this synanthropic species has hitherto been reported solely from parks, gardens or greenhouses. Virtually the same appears to concern the Asian part of the country [Mikhaljova, 1998b; Mikhaljova & Golovatch, 2001].

Blaniulidae

Nopoiulus kochii (Gervais, 1847)

MATERIAL: 1 ♂, 1 ♀ (ZMN), **Russia, Siberia**, Tomsk [9], Siberian Botanical Garden, warm greenhouse, 10.XII.1999. — 3 ♂♂, 1 ♀, 1 juv., (SUT), s.l., 3.III.2000. — 1 ♂, 1 ♀ (SUT), s.l., cold greenhouse, 10.XII.1999. — 2 ♂♂, 2 ♀♀, 10 juv. (SUT), s.l., 3.III.2000. — 1 ♂, 1 ♀, 1 juv. (SUT), s.l., Universitetskaya Roshcha, litter, 21.IV.2000; all leg. P.N. — 1 ♂, 2 ♀♀ (SUT), s.l., greenhouses of Tomskgorzelenkhoz, 20.VII.2000; leg. Yu.Ch.

REMARKS: In the Asian part of Russia, this cosmopolitan species presumably of Caucasian origins has hitherto been reported solely from the Far East, in anthropogenic and semi-natural habitats though [Loksina & Golovatch, 1979;

Golovatch & Enghoff, 1990; Mikhaljova, 1993, 1998a, b]. This is the first formal record of the family Blaniulidae, the genus *Nopoiulus* Menge, 1851, and the species in Siberia.

CHORDEUMATIDA

Diplomaragnidae

Altajosoma deplanatum (Stuxberg, 1876)

MATERIAL: 7 ♂♂, 12 ♀♀ (SUT), **Russia, Siberia**, Tomsk Area, near Zonalnyi [10], meadow, pitfall traps, 15–25.IX.1998. — 11 ♂♂, 12 ♀♀ (SUT), s.l., mixed forest, pitfall traps, 15–25.IX.1998; all leg. R.S. — 4 ♂♂, 2 ♀♀, 1 juv. (SUT), same Area, near Timiryazevskoe [5], *Betula* stand, peat soil, 29.IX.1998. — 1 ♂, 1 ♀ (SUT), same Area, near Molodiozhnyi [12], *Populus tremula* & *Betula* stand, 8.IX.1999. — 3 ♂♂, 1 ♀, 1 juv. (SUT), 1 ♂, 1 ♀ (IBSV), 1 ♂, 1 ♀ (ZMN), same Area, near Beriozkino [4], *Populus tremula* grove on slope, near pond, 28.IX.1999; all leg. P.N. — 1 ♂ (SUT), same Area, 41st railway-km from Tomsk to Taiga [14], *Betula*, *Abies*, near source of Ushayka River, litter, in stumps, 16.VII.2000. — 1 ♀ (SUT), s.l., *Betula* & *Populus* stand, litter, 3.IX.2000; all leg. A.U. — 1 ♂, 2 ♀♀, 5 juv. (SUT), Kemerovo Area, near Kuzedeyevo [23], right bank of Malyy Tiosh River, *Tilia* insular forest (= "Lipovyy ostrov"), near apiary, 9.VIII.2000; leg. P.N.

REMARKS: This species occurs in the Kemerovo and Novosibirsk areas, the southern part of Krasnoyarsk Province as well as in the Altai [Mikhaljova & Golovatch, 2001; Nefediev, 2002b] and Tomsk Area [Nefediev, 2002d]. Some of the above samples from the Tomsk and Kemerovo areas (near Kuzedeyevo) have already been incorporated into fresh publications by Nefediev [2002b, d], though without proper faunistic record.

Altajosoma kemerovo (Shear, 1990)

MATERIAL: 1 ♂ (SUT), **Russia, Siberia**, Khakassian Republic, near Kommunar [21], ca. 4 km upstream of Bolnichnyi Stream, *Betula* & *Larix* forest, hill top, 31.VII.1999, leg. P.N.

REMARKS: Originally described from the Kemerovo and Novosibirsk areas as well as Krasnoyarsk Province [Shear, 1990], this species has since been recorded also in the Altai [Mikhaljova & Golovatch, 2001].

Altajosoma bakurovi (Shear, 1990)

MATERIAL: 1 ♂ (SUT), **Russia, Siberia**, Novosibirsk Area, near Kotorovo [22], glade, pitfall traps, 14–23.VII.1988, leg. I.B. — 1 juv. (SUT), Tomsk Area, near Kandinka [7], *Pinus* & *Betula* forest on swamp, litter, 4.VI.2000. — 1 juv. (SUT), s.l., bank of Us River, *Salix*, litter, 4.VI.2000; all leg. A.U. — 1 ♂, 1 ♀, 2 juv. (SUT), same Area, near Kislovka [6], *Populus tremula* stand, 18–22.VII.2001. — 3 ♂♂, 1 ♀ (SUT), s.l., 26.VIII.2001; all leg. P.N. — 1 ♂ (ZMUM), Altai Mts., Kuraisky Mt. Range, near Aktash [28], 2500 m a.s.l., *Betula nana* + mountain tundra, under stones, 12–25.VII.2000; leg. O.G.

REMARKS: The species has originally been described from the Novosibirsk Area and Krasnoyarsk Province, Siberia [Shear, 1990]. This is a widespread species currently known from the Novosibirsk and Kemerovo areas, Krasnoyarsk Prov., Altai Republic [Mikhaljova & Golovatch, 2001] and Tomsk Area [Nefediev, 2002d], with two subspecies involved [Mikhaljova, 2000]. The above samples from the Tomsk Area have already been incorporated into a fresh publication by Nefediev [2002d], though without proper faunistic record.

Altajosoma sp.

MATERIAL: 3 juv. (SUT), **Russia, Siberia**, Novosibirsk Area,

near Kotorovo [22], *Populus tremula* stand, pitfall traps, 14–23.VII.1988, leg. I.B.

REMARKS: Based on juvenile material, it appears impossible to identify the material closer to species. However, it seems quite plausible that this sample belongs to *Altajosoma bakurovi* whose type locality lies in the Novosibirsk Area [Shear, 1990].

Shearia densecava (Gulička, 1972)

MATERIAL: 4 ♂♂, 2 ♀♀ (ZMUM), 1 ♂, 1 ♀ (IBSV), **Russia, Siberia**, Altai Mts., Kuraisky Mt. Range, near Aktash [28], 2500 m a.s.l., *Betula nana* + mountain tundra, under stones, 12–25.VII.2000; leg. O.G.

REMARKS: This species is only known from the south-eastern Altai, its *terra typica* [Mikhaljova, 2000].

Diplomaragnidae gen. sp.

MATERIAL: 3 juv. (SUT), **Russia, Siberia**, Novosibirsk Area, near Kotorovo [22], *Populus tremula* stand, pitfall traps, 14–23.VII.1988, leg. I.B. — 1 juv. (SUT), Tomsk Area, near Bazoy [18], Cape Golyi, *Betula* & *Populus tremula* stand, 3.V.1999. — 3 juv. (SUT), s.l., swamp, *Populus tremula* stand, lower terrace, 4.V.1999. — 2 juv. (SUT), same Area, near Baturino [19], Lake Liniovo, checkpoint No. 1, *Populus tremula* stand, 4.V.1999. — 1 juv. (SUT), same Area, 24 km N of Tomsk [8], *Populus tremula* stand, glades, litter, rodent trap ditches, rotten trunks, 18.VI.1999. — 6 juv. (SUT), same Area, near Anikino [11], Basandaika River, gully with stream, *Betula* & *Populus tremula* stand, 25.VI.1999; all leg. P.N. — 2 ♀♀ (SUT), s.l., Basandaika River, lower flow of stream, IX.1999; leg. A.U. — 1 ♀ (SUT), same Area, near Timiryazevskoe [5], flood-plains of Tom River, mixed herbaceous meadow, 27.VI.1999; all leg. A.U. — 6 juv. (SUT), same Area, near Lyazgino [13], *Picea obovata* & *Pinus sibirica* forest, 20.VII.1999. — 2 ♀♀ (SUT), same Area, near Boriki [3], Mazikha Channel, *Salix* grove, 21.VIII.1999. — 2 ♀♀, 6 juv. (SUT), same Area, near Yarskoe [15], *Betula* stand on slope of Tom River, 3.IX.1999. — 1 juv. (SUT), s.l., Petrov Kamen, lower part of talus, *Salix* thicket, under stones, 3.IX.1999. — 2 ♀♀, 3 juv. (SUT), s.l., second gully with stream, 3.IX.1999; all leg. P.N. — 1 ♀, 1 juv. (SUT), same Area, near Zyrjanskoe [2], *Populus tremula* & *Betula* strip along road, 7.IX.1999; leg. A.U. — 1 ♀ (SUT), Tomsk [9], Irkutsky highway, *Betula* stand, glade, 20.VII.1999. — 1 juv. (SUT), Khakassian Republic, near Kommunar [21], ca. 2 km upstream of Bolnichnyi Stream, lower part of talus, under stones and moss, 30.VII.1999. — 1 juv. (SUT), s.l., ca. 4 km upstream of Bolnichnyi Stream, *Salix*, under stones, 30.VII.1999. — 1 juv. (SUT), s.l., *Betula* stand, 31.VII.1999; all leg. P.N. — 1 juv. (SUT), s.l., honeysuckle and red currants thicket, 2.VIII.1999, leg. A.U.

REMARKS: As the material contains juveniles and females only, even a generic-level identification appears impossible, because *Diplomaragna* Attems, 1907 sensu Shear [1990] has since been split into several genera [Mikhaljova, 2000].

Anthroleucosomatidae

Ghilarovia cylindrica (Stuxberg, 1876)

MATERIAL: 25 juv. (SUT), **Russia, Siberia**, Novosibirsk Area, near Kotorovo [22], *Populus tremula* stand, on glade and in pitfall traps, 14–23.VII.1988. — 5 juv., 1 fragm. (SUT), s.l., *Abies* forest, pitfall traps, 14–23.VII.1988; all leg. I.B. & E.V. — 3 ♀♀ (SUT), Tomsk Area, near Anikino [11], Basandaika River, gully with stream, *Betula* & *Populus tremula* stand, 25.VII.1999, leg. A.U. — 1 ♂, 1 ♀ (SUT), same Area, near Yarskoe [15], first stream, *Salix* grove, 3.IX.1999. — 3 ♂♂, 6 ♀♀, 2 juv. (SUT), s.l., Tom River bank, *Betula* stand, 3.IX.1999. — 1 juv. (SUT), s.l., *Pinus* & *Betula* forest along spring, 6.VI.2000. — 1 juv. (SUT), s.l., flood-plains of Tom River, *Salix* grove, 6.VI.2000. — 1 juv. (SUT), s.l., bank of spring, 6.VI.2000; all leg. A.U. — 5 ♂♂, 4 ♀♀ (SUT), same Area, near Beriozkino [4], *Populus tremula* grove on slope, near pond, 28.IX.1999; all leg. P.N. — 2 juv. (SUT), same Area, near Kandinka

[7], *Pinus* & *Betula* forest on swamp, litter, 4.VI.2000. — 2 juv. (SUT), s.l., bank of Um River, *Salix* grove, litter, 4.VI.2000. — 1 ♂ (SUT), same Area, 41st railway-km from Tomsk to Taiga [14], *Populus*, *Abies*, litter, 3.IX.2000; all leg. A.U. — 1 juv. (SUT), same Area, near Lyazgino [13], mixed forest, III-V.2000; leg. P.N. — 7 juv. (SUT), same Area, 24 km N of Tomsk [8], *Populus tremula* stand, litter, under bark, 11.VI.2000. — 10 juv. (SUT), s.l., *Abies sibirica* & *Populus tremula*, 11.VI.2000; all leg. P.N. & A.U. — 5 juv. (SUT), same Area, environs of Tomsk, mixed forest, 11.VI.2000; leg. P.N. — 2 ♂♂, 2 ♀♀ (SUT), same Area, near Zyryanskoe [2], *Populus tremula* & *Betula* forest strip along road, 7.IX.1999, leg. A.U. — 1 ♂, 1 ♀ (SUT), Khakassian Republic, near Kommunar [21], ca. 2 km upstream of Bolnichnyi Stream, *Betula* & *Abies* forest, 2.VIII.1999. — 6 ♂♂, 11 ♀♀, 3 juv. (SUT), Kemerovo Area, near Kuzedeyevo [23], right bank of Malyy Tiosh River, *Tilia* insular forest (= "Lipovyy ostrov"), near apiary, 9.VIII.2000. — 1 ♂, 1 ♀ (SUT), s.l., 10.VIII.2000. — 1 ♀ (SUT), s.l., under bark, 10.VIII.2000. — 2 ♂♂, 1 ♀ (SUT), s.l., pitfall traps, 9–10.VIII.2000. — 1 ♂, 5 ♀♀ (SUT), s.l., Malyy Tiosh River, grassland along road, 9.VIII.2000. — 1 ♂, 1 ♀, 1 fragm. (SUT), s.l., *Tilia* forest on hill top, 12.VIII.2000. — 1 ♂, 1 ♀ (SUT), same Area, near Kosogorovo [16], *Populus* & *Betula* stand, on mushrooms, 15.VIII.2000. — 1 ♂, 1 ♀ (SUT), s.l., 17–18.VIII.2000; all leg. P.N.

REMARKS: This species, originally described as *Craspedosoma cylindricum* from between Achinsk, Krasnoyarsk Province and Mariinsk, Kemerovo Area, Siberia [Stuxberg, 1876], appears to have *Ghilarovia novosibirica* Shear, 1988, from the Novosibirsk Area, Siberia [Shear, 1988], as a junior synonym [Mikhailjova, 2002]. The species is known from the Novosibirsk, Tomsk and Kemerovo areas, and the Khakassian Republic, southwestern Siberia [Nefediev, 2002b, d; Mikhailjova, 2002]. Some of the above samples from the Tomsk and Kemerovo areas (near Kuzedeyevo) have already been incorporated into fresh publications by Nefediev [2002b, d], though without proper faunistic record. The species seems remarkable for its highly variable anterior gonopod sternal process [Mikhailjova, 2002].

ACKNOWLEDGMENTS: We are deeply obliged to all collectors who have entrusted us their material for study. In addition, Dr. S. I. Golovatch has kindly helped both with improving the English and publication.

References

- Gulička J. 1963. [New millipedes (Diplopoda) from the USSR. Part 1] // Zool. Zhurn. Vol.42. No.4. P.518–524 [in Russian, with English summary].
- Golovatch S.I. & Enghoff H. 1990. [The millipede *Nopoiulus kochii* (Gervais, 1847) in the Caucasus] // Pochvennyye bespozvonochnyye Kavkaza. Moscow: Nauka Publ. P.114–118 [in Russian, with English summary].
- Lokšina I.E. & Golovatch S.I. 1979. Diplopoda of the USSR fauna // Pedobiologia. Bd.9. S.381–389.
- Mikhailjova E.V. 1993. The millipedes (Diplopoda) of Siberia and the Far East of Russia // Arthropoda Selecta. Vol.2. No.2. P.3–36.
- Mikhailjova E.V. 1998a. The millipedes of the Far East of Russia (Diplopoda) // Ibid. Vol.7. No.1. P.1–77.
- Mikhailjova E.V. 1998b. On new and poorly-known millipedes (Diplopoda) from the Far East of Russia // Far Eastern Entomologist. No.55. P.1–8.
- Mikhailjova E.V. 2000 (for 1999). Review of the millipede family Diplomaragnidae (Diplopoda: Chordeumatida) // Arthropoda Selecta. Vol.8. No.3. P.153–181.
- Mikhailjova E.V. 2002 (for 2001). On some poorly-known millipedes from Siberia (Diplopoda) // Ibid. Vol.10. No.3. P.201–207.
- Mikhailjova E.V. & Golovatch S.I. 2001 (for 2000). A review of the millipede fauna of Siberia (Diplopoda) // Ibid. Vol.9. No.2. P.103–118.
- Nefediev P.S. 2001. [On the fauna and ecology of myriapods (Myriapoda) in the environs of the village of Smolenskoe, Altai Province] // Abstr. of the 7th Int. Conf. "The Day of the Earth. Landscapes of Western Siberia. Investigation problems, ecology and regional use". Biysk. P.84–86 [in Russian].
- Nefediev P.S. 2002a. [Eco-faunistic investigations of myriapods in the Teguldet District, Tomsk Area] // Abstr. of the Int. Confer. of students and young researchers "Lomonosov-2002". No.7. Moscow: MGU Publ. P.40–41 [in Russian].
- Nefediev P.S. 2002b. [The fauna and ecology of myriapods (Myriapoda) of the relict lime grove (village of Kuzedeyevo)] // Abstr. of the 40th Int. scientific student Confer. "Studenty i nauchno-tehnicheskij progress [Students and scientific and technical progress]". Novosibirsk. P.35 [in Russian].
- Nefediev P.S. 2002c. [Populations and some ecological peculiarities of myriapods of gray forest soils in the southern Tomsk Area] // Abstr. of the 6th School-Conference of young researchers "Biologiya, nauka 21-go veka [Biology, a science of the 21st century]", Pushchino-na-Oke, 20–24 maya 2002. Vol.3. Tula: State Pedagogical Inst. Publ. P.138–139 [in Russian].
- Nefediev P.S. 2002d. On the Diplopoda fauna of South-West Siberia // Abstr. 12th Int. Congr. Myriapodology. Pietermaritzburg. P.30.
- Shear W.A. 1988. Systematic position of the millipede species *Alloioopus solitarius* Attems and the genus *Ghilarovia* Gulička (Chordeumatida, Anthroleucosomatidae) // Myriapodologica. Vol.2. No.8. P.51–58.
- Shear W.A. 1990. On the Central and East Asian millipede family Diplomaragnidae (Diplopoda, Chordeumatida, Diplomaragnoidea) // Amer. Mus. Novit. No.2977. P.1–40.
- Stuxberg A. 1876. Myriopoder från Sibirien och Waigatsch i en samlade under Nordenskiöldska expeditionen 1875 // Öfversigt k. Vetensk.-Akad. Förhandl. Erg.33. No.2. S.11–38.