

## A survey of Crimean Linyphiidae (Aranei). 1. On seven rare and little known linyphiids from Crimea

### Обзор крымских пауков сем. Linyphiidae (Aranei). 1. О семи редких и малоизвестных пауках сем. Linyphiidae из Крыма

Valery A. Gnelitsa  
В.А. Гнелица

Sumy State Teacher's Training University, Romenskaja Str. 87, Sumy 40002 Ukraine.  
Сумской государственной педуниверситет им. А.С. Макаренко, ул. Роменская 87, Сумы 40002 Украина.

KEY WORDS: Aranei, Linyphiidae, spiders, Crimea.

КЛЮЧЕВЫЕ СЛОВА: Aranei, Linyphiidae, пауки, Крым.

**ABSTRACT.** The data on seven rare linyphiids from Crimea: *Panamomops fedotovi* (Charitonov, 1937); *Trichoncoides piscator* (Simon, 1884); *Microctenonyx subitaneus* (O. Pickard-Cambridge, 1875); *Theonina kratochvili* Miller & Weiss, 1979; *Hypsocephalus dahli* (Lessert, 1909); *Canariphantes nanus* (Kulczyński, 1898) and *Crosbyarachne bukovskyi* Charitonov, 1937 are presented. *Tapinocyba korgei* Wunderlich, 1995 syn.n. described from Turkey is synonymised with *C. bukovskyi*. All species are provided with detailed morphological pictures to help identify them.

**РЕЗЮМЕ.** Приведены данные о семи редких видах сем. Linyphiidae из Крыма: *Panamomops fedotovi* (Charitonov, 1937); *Trichoncoides piscator* (Simon, 1884); *Microctenonyx subitaneus* (O. Pickard-Cambridge, 1875); *Theonina kratochvili* Miller & Weiss, 1979; *Hypsocephalus dahli* (Lessert, 1909); *Canariphantes nanus* (Kulczyński, 1898); *Crosbyarachne bukovskyi* Charitonov, 1937. *Tapinocyba korgei* Wunderlich, 1995 syn.n. синонимизирован с *C. bukovskyi*. Для каждого вида даны детальные рисунки, делающие более уверенным их определение.

#### Introduction

Because of extensive collecting during the last 10 years and the publishing of the data we have considerably widened our knowledge of the spider fauna of Crimea. The preliminary information on spider species composition in Crimea was ordered in "Katalog paukov Kryma" [Kovblyuk, 2003]. Further the new spider species, including rare and little known ones, were found on the Crimean peninsula.

In this paper we give the information on seven rare Linyphiidae species: *Panamomops fedotovi* (Charitonov, 1937); *Trichoncoides piscator* (Simon, 1884); *Microctenonyx subitaneus* (O. Pickard-Cambridge, 1875); *Theonina kratochvili* Miller & Weiss, 1979; *Hypsocephalus dahli* (Lessert, 1909); *Canariphantes nanus* (Kulczyński, 1898); *Crosbyarachne bukovskyi* Charitonov, 1937. The detailed pictures help in species identification and the Crimean territory scheme with distribution points for every mentioned species are given.

Faunistic material used of this article was collected by N.M. Kovblyuk and by the author in 2000–2007 and now is deposited in author's private collection. The name of collector, in the text and — the data gathered by N.M. Kovblyuk are listed. All citations have been checked with [Platnick, 2008]. All measurements are in mm.

#### Species survey

*Canariphantes nanus* (Kulczyński, 1898)  
Figs 1a–g, 8.

*Lepthyphantes nanus* Kulczyński, 1898: 86, pl. 2, f. 59–60 (♀).

*Lepthyphantes n.*: Miller, 1947: 80, pl. XV, f. 1–4 (♂).

*Lepthyphantes n.*: Miller, 1971: 226, pl. XLIV, f. 7–8 (♂♀).

**MATERIAL.** 3 ♀♀, **Yalta**, Mys Martyan Reserve, *Pinus pallasi*, *Juniperus excelsa*, *J. oxycedrus*, *Carpinus*, *Arbutus*, with *Coronilla* and *Ruscus*, in grass and in dead leaves, 20.04.2002; ♀, 2 ♂♂, *Quercus pubescens*, *Juniperus excelsa*, *J. oxycedrus*, *Carpinus*, *Arbutus* with *Coronilla* and *Ruscus*, 18.10.2002; 2 ♀♀, ♂, *Quercus pubescens*, *Juniperus excelsa*, *Cistus tauricus*, *Ruscus ponticus*, 18.10.2002 (Kovblyuk); 2 ♀♀, *Arbutus*, *Juniperus excelsa*, *J. oxycedrus*, *Quercus pubescens*, *Buxus* with *Cistus*, *Coronilla*, *Jasminum* and *Bupleurum*, in litter, 27.05.2007 (Kovblyuk); ♀, **Alushta Distr.**, South Demerdzhi, E slope, *Pinus* terraced, in grass and in litter, 12.10.2002; 8 ♀♀, **Chernomorsky Distr.**, Kastel gully, upper reaches, *Crataegus* forest with *Rosa* on ground, 21.04.2004; ♀, slope, old *Crataegus* trees and bushes, in grass, 21.04.2004; 4 ♀♀, middle part, *Crataegus*, on ground, 22.04.2004;

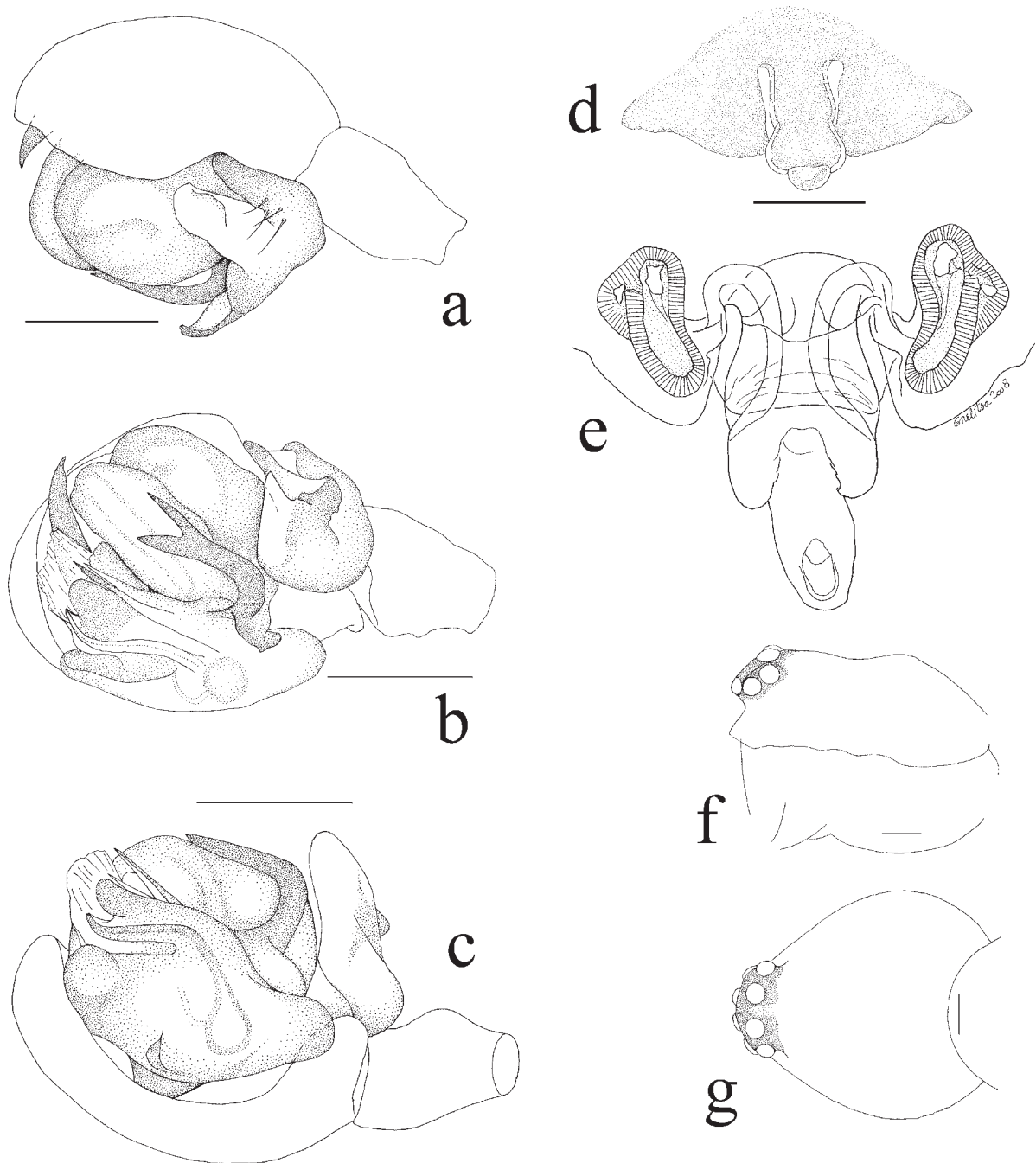


Fig. 1. *Canariphantes nanus*: a–c — male palp, lateral, ventral and median views; d — epigyne, ventral view; e — vulva; f, g — male carapace laterally and dorsally.

Рис. 1. *Canariphantes nanus*: а–с — пальпа самца, вид сбоку, сверху и от середины; d — эпигина; e — вульва; f, g — карапакс самца, вид сбоку и сверху.

♀, 2 ♂♂, in grass and in moss, 15.10.2004; ♀, **Lenin Distr.**, Opuk Reserve, open stony place, in grass, 20.04.2005; 5 ♀♀, ♂, **Pheodosia Distr.**, Karadagh Reserve, Svyataya Mt. foot, SE slope of wide valley with *Pinus pallasiana* terraces, in litter, 23.04.2003; ♀, NW slope of Beregovoy range, upper border of *Quercus*, *Fraxinus*, *Pyrus* forest with *Cornus*, *Jasminum*, *Euonimus* and *Rosa*, 25.04.2003; ♀, SSE slope, *Quercus pubescens*, *Pistacia*, *Juniperus excelsa* with *Jasminum*, in grass and in soil depressions, 26.04.2003; ♀, North Pass, *Quercus petraea*, *Acer*, *Cornus*, in litter, 20.04.2003;

♀, SSW slope, *Pinus pallasiana* plantation, in litter, 19.04.2003; 16 ♀♀, 3 ♂♂, Syuryu-Kaya Mt., E slope, *Quercus petraea*, *Carpinus*, *Fraxinus* with *Cornus*, in soil depressions and near roots of trees, 22.04.2003; 6 ♀♀, 4 ♂♂, sparse *Quercus*, in grass, 11.10.2003.

COMMENTS. The genus is a member of *Bolyphantes*–*Poecilometes* genus-group of the Micronetinae [Saaristo & Tanasevitch, 2000]. Owing to weak contrast of palp parts of

this tiny (male 1.3 mm, female 1.4 mm) spider and the lack of detailed drawings of this species the male can be confused with *Meioneta*. To avoid this one should direct attention to the shape of the paracymbium and straight bifurcated at the tip lamella characteristic.

*C. nanus* is the only species of the genus (containing 4 species) in Ukraine, and Ukraine is the easternmost boundary of the species and genus range.

**DISTRIBUTION.** Austria, Czech Republic, Hungary, Romania, Slovakia [Helsdingen, 2007]. Besides Crimean peninsula the species was found in Nature Park "Granitno-Stepnoye Pobuzhye" (north part of Nikolayev Area) and in Chernomorsky Reserve (Cherson Area) in different habitats: in grass or moss near the stones on the meadow, and at the base of trees in pine or oak forests.

*Crosbyarachne bukovskiyi* Charitonov, 1937

Figs 2a–i, 8.

*Crosbyarachne bukovskiyi* Charitonov, 1937: 137–138, pl. 12, f. 5–8 (♂♀).

*Tapinocyba korgei* Wunderlich, 1995: 665–666, f. 63–68 (♂, not ♀) **syn.n.**

**MATERIAL.** ♂, **Bakhchisaraysky Distr.**, Rodnoye Vill., slope of gully, *Corylus*, *Vitis*, *Clematis*, *Hedera*, on ground and in grass, 18.04.2001; ♂, Merdven Kayasy Mt., *Pinus pallasiana*, *Quercus pubescens*, *Acer*, *Carpinus*, with *Cornus*, *Crataegus* and *Hedera*, in litter, 13.10.2001; ♀, **Alushta Distr.**, South Demerdzhi, bottom of Dzhurla River ravine, *Fagus*, *Carpinus*, *Quercus*, *Acer*, *Fraxinus*, *Tilia* with *Cotinus*, in dead leaves between stones, 09.10.2002; 2 ♀♀, E slope, *Fagus* forest, in cereal grass and in dead leaves, 13.10.2002; 3 ♀♀, 2 ♂♂, **Yalta**, Botkin Path, E slope, *Pinus pallasiana*, *Quercus pubescens*, *Carpinus betulus* with *Swida*, *Crataegus* and *Ruscus*, in litter and in burrows of small rodents, 17.10.2002; ♂, Nikita Vill., *Pinus pallasiana* forest, 15–22.04.2000 (Kovblyuk); 8 ♂♂, Nikitskaya Yaila, cereals meadow with *Rosa*, 31.03–12.04.2001 (Kovblyuk); 3 ♂♂, *Pinus kochiana* forest, 22.04–04.05.2001, (Kovblyuk); 2 ♂♂, *Pinus pallasiana*, *Fagus*, *Populus*, *Acer*, 22.04–04.05.2001, (Kovblyuk); ♂, *Pinus kochiana* forest, 31.03–12.04.2001 (Kovblyuk); 2 ♂♂, *Pinus pallasiana*, *Fagus*, *Populus*, *Acer*, 12–22.04.2001 (Kovblyuk); ♂, *Pinus pallasiana*, *Quercus petraea*, *Carpinus betulus*, *Acer*, 22.04–04.05.2001 (Kovblyuk); ♂, **Pheodosia Distr.**, Karadagh Reserve, N slope of Svyataya Mt., *Quercus petraea*, *Carpinus betulus* with *Cornus*, in grass and litter, 21.04.2003; ♀, 3 ♂♂, Echkidag Mt., E slope, *Quercus pubescens*, *Carpinus betulus*, *Cornus*, in dead leaves and in litter, 28.04.2003; 11 ♀♀, 9 ♂♂, sparse *Carpinus betulus* and *Quercus pubescens* with *Cornus* in dead leaves, 28.04.2003; ♂, **Kirov Distr.**, Bolshoy Agarmysh Mt., S stony slope, cereals, *Asphodeline*, in grass and under stones, 29.04.2003; ♂, **Alushta Distr.**, South Demerdzhi, *Fagus* forest on steep slope, in *Hedera* and in dead leaves between stones, 16.04.2002.

**COMMENTS.** *Crosbyarachne* Charitonov, 1937 is monotypic genus of the *Tapinocyba*-group of genera [Millidge, 1977]. Until recently it was known from Crimea only and only by original description. Comparison of Crimean specimens of *C. bukovskiyi* with figures and description of the male of *Tapinocyba korgei* Wunderlich, 1995 described from Turkey, revealed that male of *Tapinocyba korgei* has no differences with those of *C. bukovskiyi* and therefore two names should be synonymised. Paratype female of *Tapinocyba korgei* is not conspecific with holotype and paratype males and belongs elsewhere.

Here I provide brief redescription of *C. bukovskiyi* on the basis of topotype specimens.

**MALE.** Total length 1.37. Carapace pale yellow-grey, 0.67 long 0.48 wide. Chelicerae with promarginal 5 teeth, and 4 retromarginal. Sternum pale yellow with pale brown margins 0.38 long and 0.35 wide. Distance between the

posterior median eyes is slightly less their diameter; Tibial spines 1:1:1:1. Legs: Femur I–IV (0.41 – 0.39 – 0.32 – 0.40); Patella I–IV (0.17 – 0.17 – 0.15 – 0.16); Tibia I–IV (0.31 – 0.26 – 0.22 – 0.35); Metatarsus I–IV (0.24 – 0.21 – 0.21 – 0.24); Tarsus I–IV (0.21 – 0.21 – 0.20 – 0.21), Tarsus I–II with strongly pectinated claws. Metatarsal trichobothria: I — 0.47; II — 0.46; III — 0.44; Palp as in Figs. 2a–c.

**FEMALE.** The size and color as in male. Epigyne as in Fig. 2e, vulva as in Fig. 2f.

**DISTRIBUTION.** For long time *Crosbyarachne* was considered as the only genus endemic to Crimea. Synonymy of *C. bukovskiyi* and *T. korgei* reveals that genus and species have wider range and occur in Crimea and Turkey.

*Hypsocephalus dahli* (Lessert, 1909)

Figs 3a–g, 8.

*Mecopisthes perpusillus* Miller, 1966: 270, pl. LXI, f. 30–32 (♂♀).

*H. d.*: Millidge, 1978: 119, f. 23, 26–27, 32, 37, 40, 43 (♂♀).

**MATERIAL.** ♂, **Simferopol Distr.**, Lozovoye Vill., sparsed *Stipa* steppe, 25.03–04.04.2000 (Kovblyuk); ♂, **Bakhchisaraysky Distr.**, Baydarskaya Yaila, Chelebi-Yaury-Beli Mt., *Carpinus*, *Quercus pubescens*, *Acer* forest with *Cornus*, *Euonimus* and *Hedera*, in litter, 08.10.2001; ♂, NE slope of Ilyas-Kaya Mt., sparse *Pyrus*, *Fraxinus*, *Jasminum*, in grass, 09.10.2001; ♀, **Alushta Distr.**, South Demerdzhi, S slope, cereals and motley grass meadow, in ground depressions and in grass, 12.04.2002; ♀, edge of old *Fagus* forest, motley grass meadow with *Rosa*, *Cerastium biebersteinii*, *Achillea*, *Teucrium*, *Fragaria* and *Potentilla*, in grass near the stones and in passages of small rodents, 13.10.2002; ♀, **Pheodosia Distr.**, Karadagh reserve, lower reaches of Karadagh Valley, N slope of ravine, sparse *Quercus pubescens*, *Pistacia*, *Juniperus*, in soil depressions, 17.04.2003; 15 ♀♀, 5 ♂♂, stream at bottom of ravine, in dead grass and leaves near water, 17.04.2003; 10 ♀♀, 4 ♂♂, 19.04.2003; ♀, 2 ♂♂, 26.04.2003; 2 ♀♀, SE slope, sparsed *Quercus pubescens* and *Pistacia*, in grass and under stones, 19.04.2003; 5 ♀♀, 6 ♂♂, Svyataya Mt. slope, edge of *Quercus*, *Fraxinus*, *Acer* forest with *Pyrus* and *Jasminum*, in dead leaves and in grass, 12.10.2003; ♀, SW slope, *Quercus petraea*, *Acer*, *Paliurus*, *Fraxinus* and *Cornus* forest, in grass and litter, 20.04.2003; 2 ♀♀, S slope of Syuryu-Kaya Mt., steppe with sparsed *Paliurus* and *Rosa*, in grass, 21.04.2003; ♀, sparse *Quercus petraea*, *Pyrus* and *Jasminum* beside of *Quercus-Carpinus-Fraxinus* forest, in grass, 22.04.2003; ♀, Svyataya Mt. foot, SE slope of wide valley with *Pinus pallasiana* terraced, in litter, 23.04.2003; ♀, SSW terraced slope with sparse *Quercus pubescens*, *Pyrus* and small *Pinus*, in grass and under stones, 24.04.2003; 2 ♂♂, bottom of Tumanov Ravine, stream, in dead grass and leaves near water, 25.04.2003; 6 ♀♀, 3 ♂♂, NW slope of Beregovoy range, upper border of *Quercus*, *Fraxinus*, *Pyrus* forest with *Cornus*, *Jasminum*, *Euonimus* and *Rosa*, 25.04.2003; 2 ♀♀, Syuryu-Kaya Mt. slope, sparsed *Quercus pubescens* forest, in grass, 11.10.2003; ♀, ravine, *Fragmitis*, in dead leaves on soil and in small cavities, 13.10.2003; ♀, Nanikovo Vill., Barakol Solt Lake side, *Salicornia*, *Artemisia* and sparse cereals, in detritus and on soil near water, 27.04.2003; 4 ♀♀, ♂, E slope of Echkidag Mt., sparse *Carpinus* and *Quercus* forest, in dead leaves near rock, 28.04.2003; 2 ♀♀, **Yalta**, Mys Martyan Reserve, *Arbutus*, *Quercus pubescens*, *Carpinus*, *Juniperus excelsa*, *J. oxycedrus* with *Cistus*, *Coronilla* and *Ruscus*, in litter, 29.04.2007 (Kovblyuk); 7 ♀♀, 2 ♂♂, coastal slope, *Arbutus*, *Quercus pubescens*, *Juniperus excelsa*, sifting of litter, 10.02.2007 (Kovblyuk); 2 ♀♀, in grass, 10.03.2002 (Kovblyuk); ♀, upper from coastal slope, *Quercus pubescens*, *Carpinus*, *Juniperus excelsa*, *J. oxycedrus*, *Paliurus* with *Cistus*, *Coronilla* and *Jasminum*, in litter, 05.05.2007 (Kovblyuk); 12 ♀♀, 5 ♂♂, coastal precipice, *Quercus pubescens*, *Carpinus*, *Juniperus excelsa*, *J. oxycedrus* with *Cistus*, sifting of litter, 08.03.2007 (Kovblyuk); ♀, *Arbutus*, *Juniperus excelsa*, *J. oxycedrus*, with *Cistus*, *Bupleurum* and *Ruscus*, 21.04.2007 (Kovblyuk); ♀, scree, under stones, 08.03.2007 (Kovblyuk); ♀, lower part of coastal precipice, *Arbutus*, *Quercus pubescens*, *Juniperus excelsa*, with *Cistus* and *Ruscus*, 10.02.2007 (Kovblyuk); ♀, 2

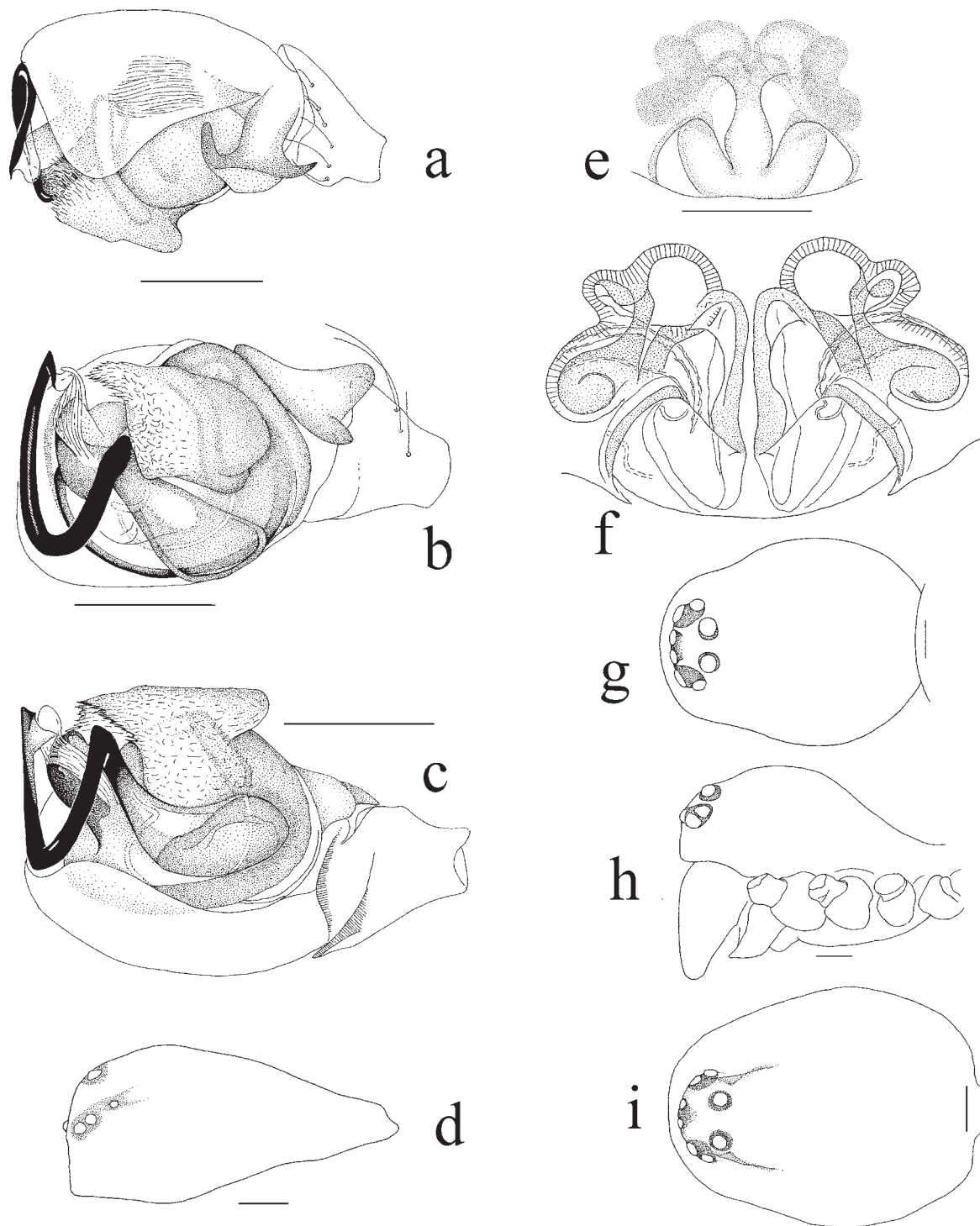


Fig. 2. *Crosbyarachne bukovskiy*: a-c — male palp, lateral, ventral and median views; d, g — male carapace laterally and dorsally; e — epigyne, ventral view; f — vulva; h, i — female carapace laterally and dorsally.

Рис. 2. *Crosbyarachne bukovskiy*: a-c — пальпа самца, вид сбоку, сверху и от середины; d, g — карапакс самца, вид сбоку и сверху; e — эпигина, вид снизу; f — вульва; h, i — карапакс самки, вид сбоку и сверху.

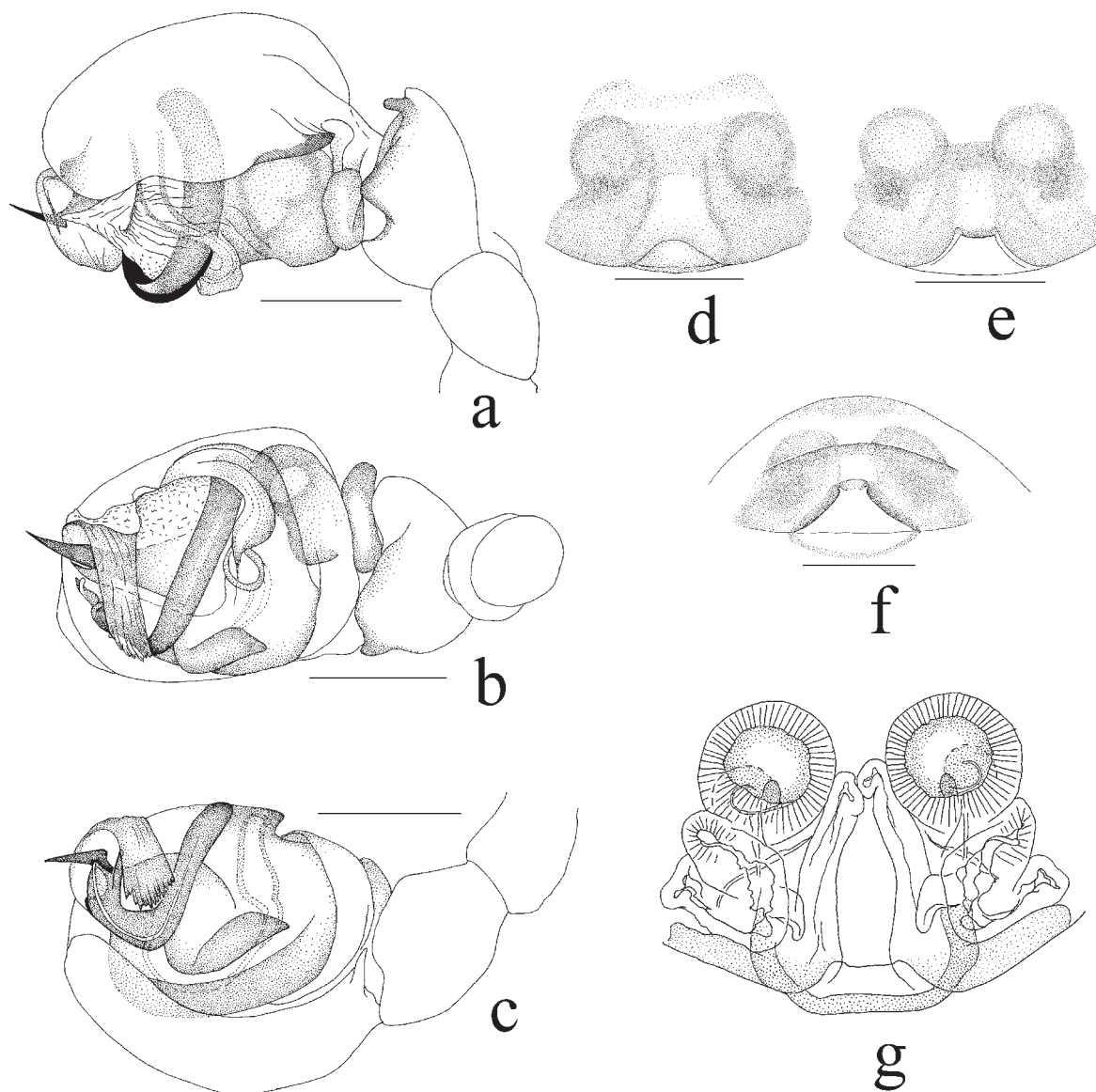


Fig. 3. *Hypsocephalus dahli*: a-c — male palp, lateral, ventral and median views; d-f — epigyne ventrally, ventro-caudally and caudally; g — vulva.

Fig. 3. *Hypsocephalus dahli*: a-c — пальпа самца, вид сбоку, сверху и от середины; d-f — эпигина, вид снизу, снизу и сзади, вид сзади; g — вульва.

♂♂, *Quercus pubescens*, *Juniperus excelsa*, *Cistus tauricus*, *Ruscus ponticus*, 18.10.2002 (Kovblyuk); 3 ♀♀, *Juniperus excelsa*, *J. oxycedrus*, *Quercus pubescens*, *Arbutus*, *Buxus* with *Cornus*, *Cistus*, *Ruscus* and *Bupleurum*, in litter, 07.04.2007 (Kovblyuk); ♂, Botkin Path, E slope, *Quercus pubescens*, *Juniperus excelsa*, *J. oxycedrus*, *Jasminum* with *Asphodeline*, 17.10.2002; ♀ Masandra, *Pistacia mutica* silva rara, 12–24.03.2001 (Kovblyuk).

COMMENTS. The position of *Hypsocephalus* is intermediate between *Mecopisthes* and *Silometopus* of the *Pelecopsis* group [Millidge, 1977, 1978].

*Hypsocephalus dahli* is an only one species in Ukraine of four *Hypsocephalus* species. The female of this species may be confused with *Mecopisthes silus*. Detailed drawings are given in order to avoid misidentifications.

DISTRIBUTION. Czech Republic, Poland, Romania, Slovakia [Helsdingen, 2007] and Ukraine. This species has not yet been found in the rest of Ukraine.

*Microctenonyx subitaneus* (O. Pickard-Cambridge, 1875)

Figs 4a–g, 8.

*Aulacocyba* s.: Crosby & Bishop, 1933b: 131, pl. 4, fig. 93–98 (♂♀).

*Aulacocyba* s.: Wiehle, 1960: 458, f. 846–853 (♂♀).

MATERIAL. ♀, ♂, **Pheodosia Distr.**, Karadagh Reserve, ravine, *Fragmitis*, in dead leaves, on the soil and in small cavities, 13.10.2003.

COMMENTS. Thorell [1875] was the first who reported this species in Crimea (sub *Erigone pulicaria*) near Sevastopol City. Karadagh Reserve is the second point of this extremely rare species in Crimea.

DISTRIBUTION. Austria, Azores, Balearic Islands, Belgium, Britain, Bulgaria, Canary Is., Denmark, France, Ger-

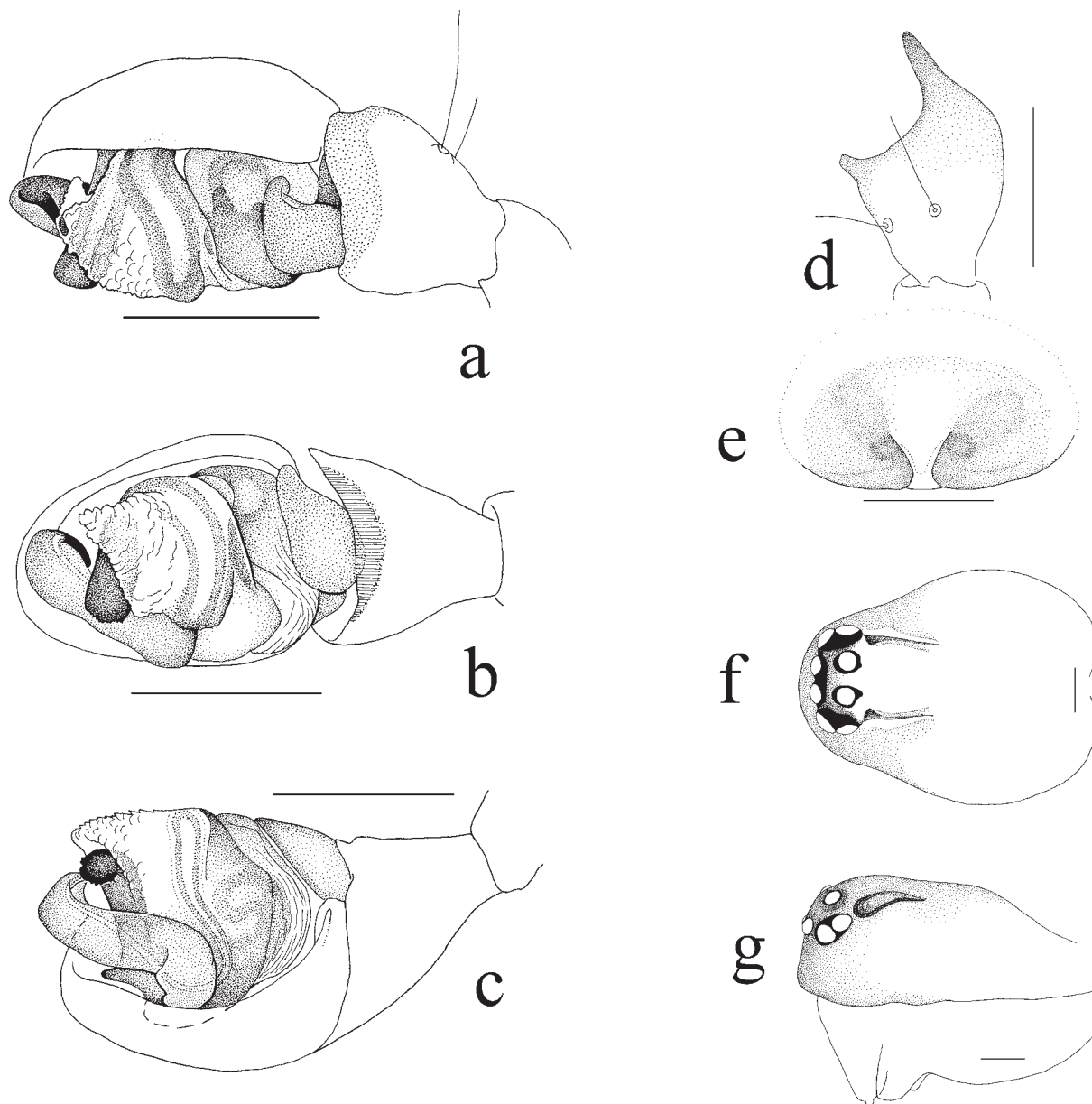


Fig. 4. *Microctenonyx subitaneus*: a-c — male palp, lateral, ventral and median views; d — palpal tibia dorsally; e — epigyne, ventral view; f, g — male carapace dorsally and laterally.

Рис. 4. *Microctenonyx subitaneus*: a-c — палпы самца, вид сбоку, сверху и от середины; d — голень пальпы, вид сверху; e — эпигина, вид снизу; f, g — карапакс самца, вид сверху и сбоку.

many, Iceland, Italy, Liechtenstein, Madeira, Norway, Poland, Portugal, Romania, Sardinia, Spain, Sweden, Switzerland, Netherlands, Ukraine, former Yugoslavia [Helsdingen, 2007], Turkmenistan, Kyrgyzstan [Mikhailov, 1997], Nearctic [Crosby & Bishop, 1933], USA [Buckle et al., 2001].

*Panamomops fedotovi* (Charitonov, 1937)  
Figs 5a-e, 8.

*Microstrandina fedotovi* Charitonov, 1937: 134-136, pl. 12 f. 2-4 (♂♀).  
*P. f.*: Tanasevitch, 1987: 356, f. 111-115 (♂♀).

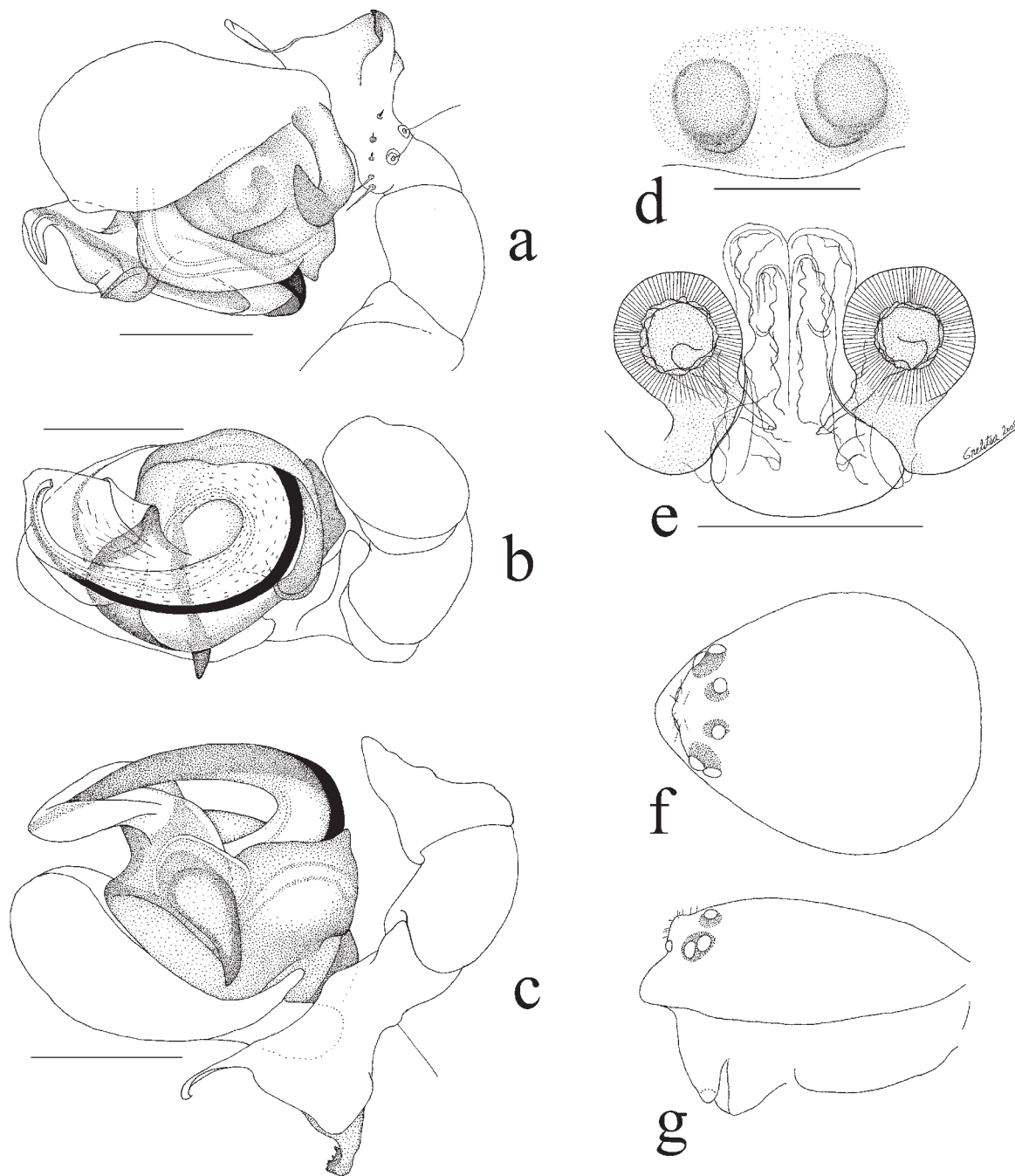


Fig. 5. *Panamomops fedotovi*: a-c — male palp, lateral, ventral and median views; d — epigyne, ventral view; e — vulva; f, g — male carapace dorsally and laterally.

Рис. 5. *Panamomops fedotovi*: a-c — пальпа самца, вид сбоку, сверху и от середины; d — эпигина, вид снизу; e — вульва; f, g — карапакс самца, вид сверху и сбоку.

*P. f.*: Tanasevitch, 1990: 104, f. 23.1, 24.9, 28.25–26 (♂♀).

MATERIAL. ♀, ♂, **Alushta Distr.**, South Demerdzhi, S slope up from *Quercus* belt, in *Thymus*, 13.04.2002; ♀, ♂, E slope, cereals steppe with *Rosa*, *Festuca* and *Stipa*, in grass near stones, 14.04.2002; ♀, ♂, E slope, old *Fagus* forest, in dead grass and in soil litter, 14.04.2002; 14 ♀♀, 9 ♂♂, E slope, old *Fagus* forest, in dead leaves and on soil, 15.04.2002; 2 ♀♀, ♂, *Fagus* forest on slope, 17.04.2002; 4 ♀♀, 4 ♂♂, SSE slope, motley grass meadow with cereals-*Achillea* — *Fragaria* domination with solitary *Pyrus*

and *Crataegus*, 11.10.2002; 4 ♀♀, ♂, NE slope, sparse old *Fagus* with moss and lichen, in dead leaves and moss, 12.10.2002; 22 ♀♀, 9 ♂♂, E slope, *Fagus* forest, in cereal grass and in dead leaves, 13.10.2002; 2 ♀♀, edge of old *Fagus* forest, motley grass meadow with *Rosa*, *Cerastium biebersteinii*, *Achillea*, *Teucrium*, *Fragaria* and *Potentilla*, in grass near stones and in passages of small rodents, 13.10.2002; ♀, ♂, edge of old *Fagus* forest, motley grass meadow, in grass and on soil under dead leaves, 14.10.2002; 2 ♂♂, North Demerdzhi, Yaila, *Pinus* plantation with solitary young

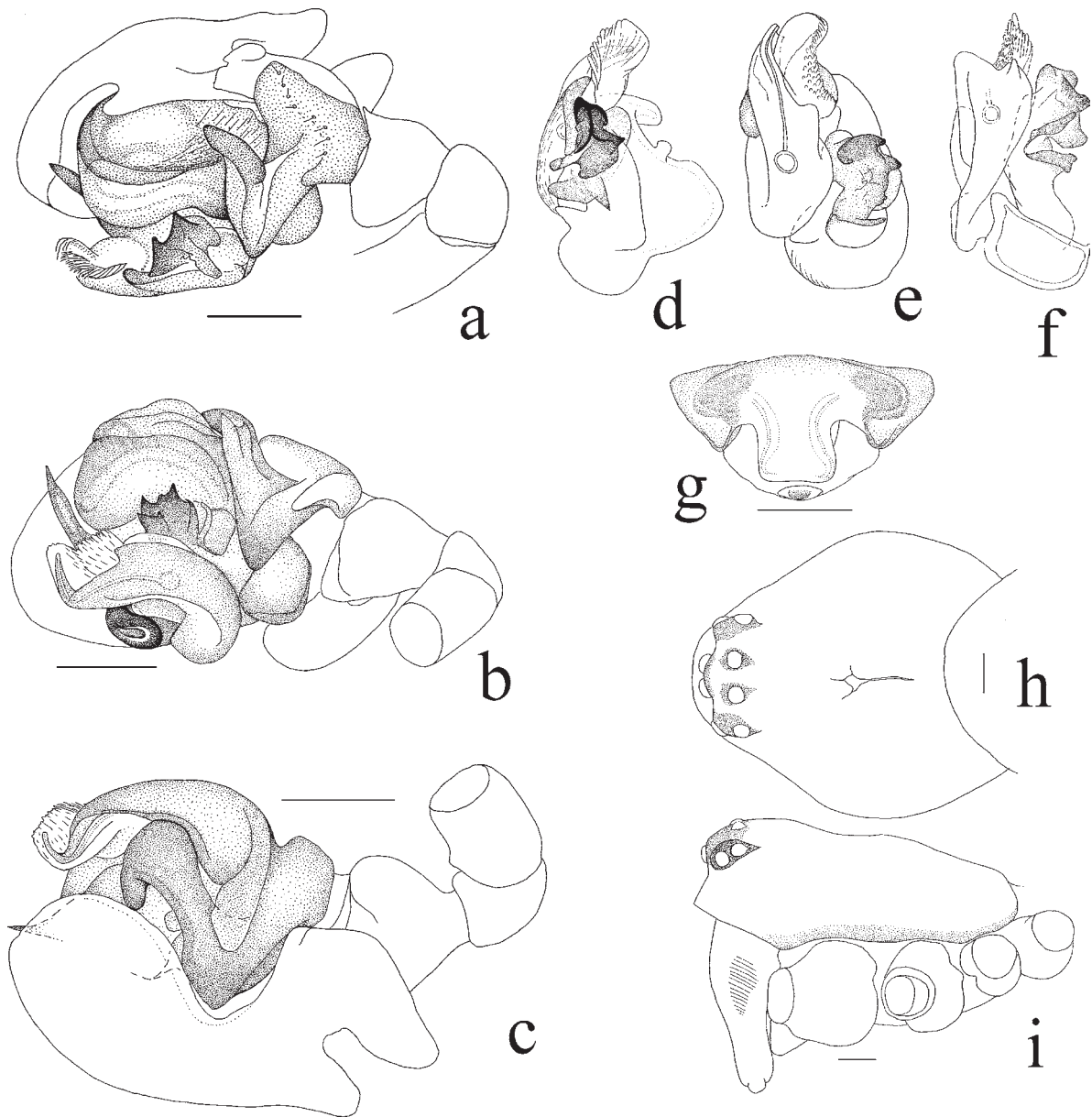


Fig. 6. *Theonina kratochvili*: a-c — male palp, lateral, ventral and median views; d-f — embolic division different turns; g — epigyne, ventral view; h, i — male carapace dorsally and laterally.

Рис. 6. *Theonina kratochvili*: a-c — палпа самца, вид сбоку, сверху и от середины; d-f — эмболозный отдел под разным углом; g — эпигина, вид снизу; h, i — карапакс самца, вид сверху и сбоку.

birches, in grass and in moss, 15.10.2002; ♀, 2 ♂♂, open place in *Pinus* plantation, in grass and in moss, 15.10.2002; ♀, NE stony slope, place with motley grass, on soil and between stones, 15.10.2002; 3 ♀♀, ♂, *Acer* plantation with sparse young birches, in grass and on soil, 16.10.2002; 2 ♂♂, **Yalta**, Nikitskaya Yaila, *Zerna cappadocica* — prata monospeciosa, 02–12.06.2001 (Kovblyuk); ♂, 23.06–03.07.2001 (Kovblyuk); ♂, 12–23.06.2001 (Kovblyuk); ♂, **Simferopol**, near storage pond, S slope, *Pinus pallasiana* plantation in petrophytic steppe with *Asphodeline*, 14–26.05.2000 (Kovblyuk); ♀, ♂, **Pheodosia Distr.**, Karadag reserve, Svyataya Mt., *Quercus-Fraxinus* forest, in grass and dead leaves, 23.04.2003.

COMMENTS. This species is very close to *P. inconspicuus* (Miller & Valesova, 1964) occurring in xerothermic places of Alps in Italy, Germany and Czech Republic [Thaler, 1993]. The distinctive features of *Panamomops fedotovi* are as follows: more massive distal part of embolus, particularly its curved end, narrow protruding male clypeus; vulva with thick wall of receptacles and different trace of insemination “ducts”.

DISTRIBUTION. Ukraine (Crimea only), Georgia, Armenia [Tanasevitch, 1987, 1990].



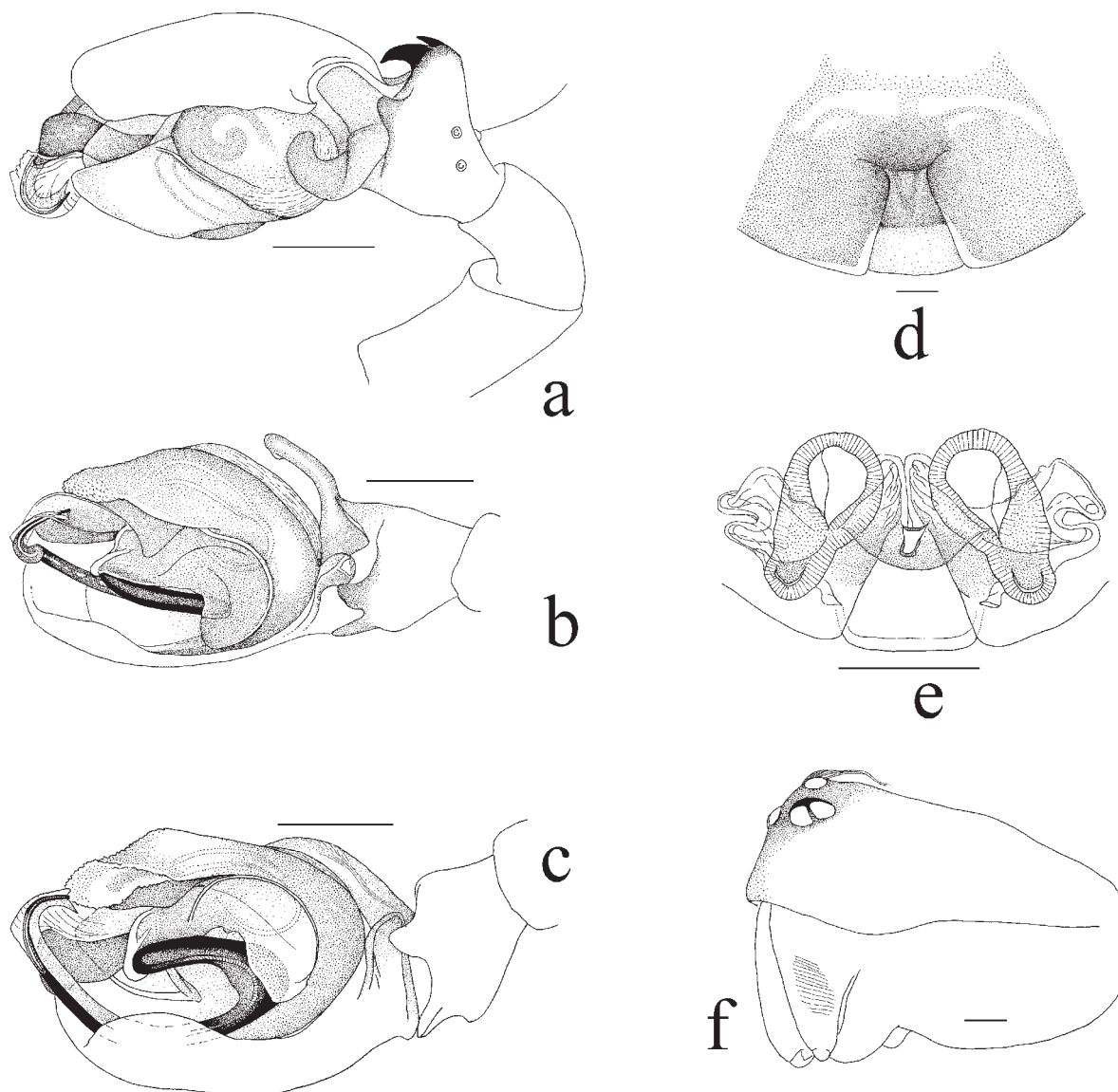


Fig. 7. *Trichoncoides piscator*: a–c — male palp, lateral, ventral and median views; d — epigyne, ventral view; e — vulva; f — male carapace laterally.

Fig. 7. *Trichoncoides piscator*: a–c — палпы самца, вид сбоку, сверху и от середины; d — эпигина, вид снизу; e — вульва; f — карапакс самца, вид сбоку.

*Theonina kratochvili* Miller & Weiss, 1979

Figs 6a–i, 8.

*T. k.* Miller & Weiss, 1979: 30–32, pl. 1, f. 1–10 (♂♀).

MATERIAL. 2 ♀♀, **Bakhchisaraysky Distr.**, Rodnoye Vill., NW slope of gully, motley grass meadow, 19.04.2001; 2 ♀♀, 2 ♂♂, between Baydarsky Yaila and Ilyas-Kaya Mt., motley grass meadow, in grass, 26.04.2001; ♀, 3 ♂♂, Ylyas — Kaya Mt., Tishlar rocks, sparse *Quercus* and *Acer* with *Hedera*, in grass near the rocks, 09.10.2001; 3 ♀♀, ♂, Aypetry Yaila, motley grass meadow with sparse *Pyrus*, in grass and on soil, 01.05.2001; ♀, ♂ cereal meadow, in grass, 13.10.2001; ♂, Byuzuzyka Mt., SE slope, *Quercus*, *Fraxinus*, *Carpinus orientalis*, *Ligustrum*, *Rosa*, in grass near the rocks, 13.10.2001; ♂, **Alushta Distr.**, South Demerdzhi, E slope, cereal steppe with *Rosa*, in grass near the stones, 14.04.2002; 6 ♀♀, 2 ♂♂, S slope, motley grass meadow with *Cerastium biebersteinii*, in grass

and moss, 17.04.2002; 15 ♀♀, 27 ♂♂, SSE slope, motley grass meadow with sparse *Crataegus*, *Prunus*, *Pyrus*, *Fraxinus* and *Rosa*, in grass and on the soil near stones, 10.10.2002; 5 ♀♀, 11 ♂♂, S slope, motley grass meadow, cereals, *Achillea*, *Fragaria* with solitary *Pyrus* and *Crataegus*, 11.10.2002; 2 ♀♀, 4 ♂♂, E slope, edge of old *Fagus* forest, in soil litter, 13.10.2002; 11 ♀♀, 18 ♂♂, motley grass meadow with *Rosa*, *Cerastium biebersteinii*, *Achillea*, *Teucrium*, *Fragaria* and *Potentilla*, in grass near the stones and in passages of small rodents, 13.10.2002; 19 ♀♀, 19 ♂♂, edge of the old *Fagus* forest, motley grass meadow with *Rosa*, *Cerastium biebersteinii*, *Achillea*, *Teucrium*, *Fragaria* and *Potentilla*, in grass near the stones and in passages of small rodents, 14.10.2002; 2 ♀♀, 6 ♂♂, motley grass meadow, in grass near the stones, 14.10.2002; 2 ♀♀, North Demerdzhi, Yaila, open place in *Pinus* plantation, in grass and in moss, 15.10.2002; 4 ♂♂, **Simferopol Distr.**, Andrusovo Vill., N slope, *Pinus pallasiana* terraced with *Rosa*, *Cotinus*, *Crataegus* and *Swida*, 01–14.05.2000 (Kovblyuk); ♂, 06–23.06.2000 (Kovblyuk);

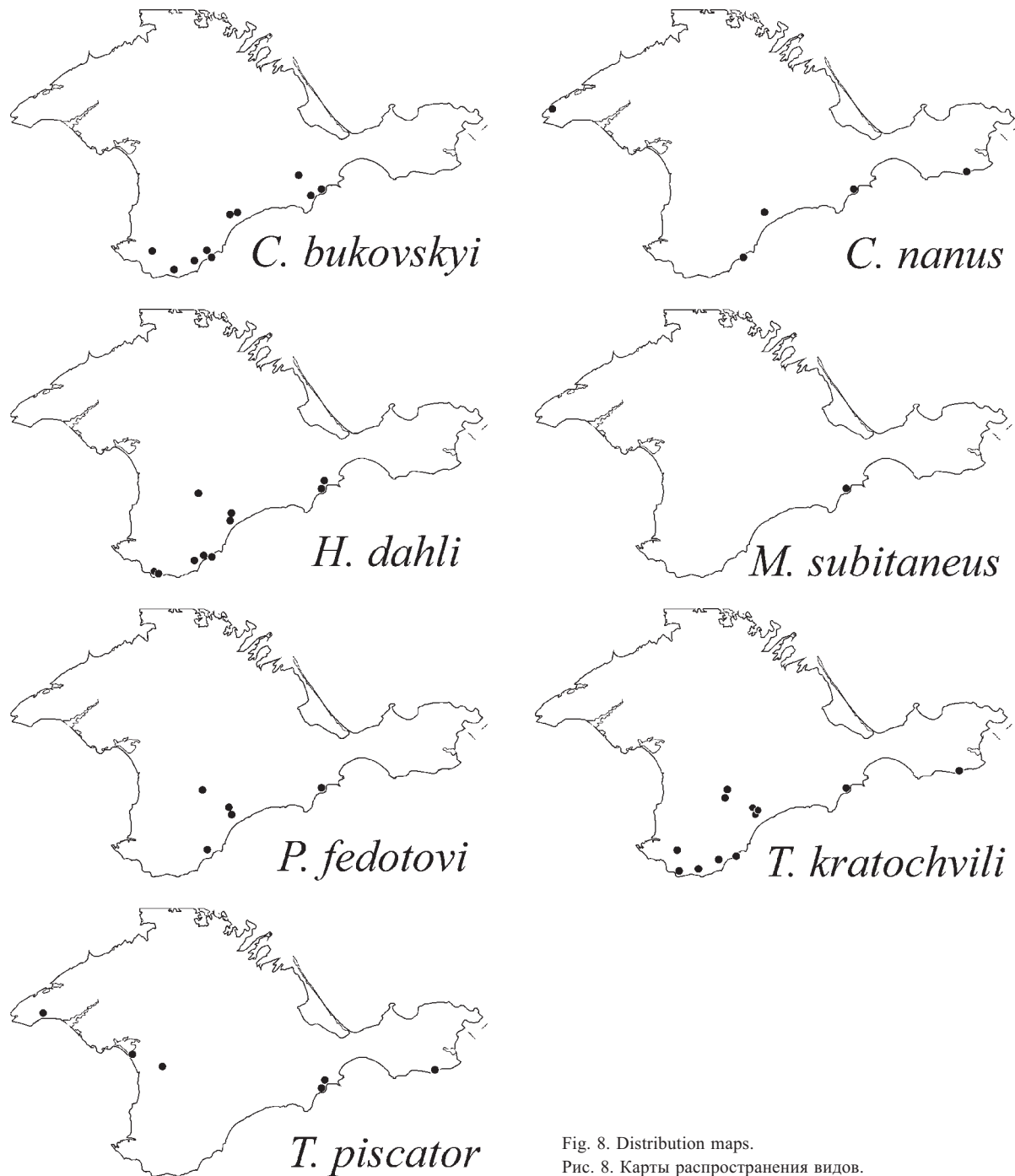


Fig. 8. Distribution maps.

Рис. 8. Карты распространения видов.

4 ♂♂, 18.04–01.05.2000 (Kovblyuk); ♂, 04–18.04.2000 (Kovblyuk); 3 ♂♂, 26.05–06.06.2000 (Kovblyuk); ♀, 23.06–13.07.2000 (Kovblyuk); ♀, Fersmanovo Vill., Kessler forest, meadow in the open place of the forest, 06–23.06.2000 (Kovblyuk); 2 ♂♂, **Simferopol**, storage pond, S slope, *Pinus pallasiana* plantation in petrophytic steppe with *Asphodeline*, 25.03–04.04.2000 (Kovblyuk); ♂, 06–19.02.2000 (Kovblyuk); 3 ♂♂, **Pheodosia Distr.**, Karadag reserve, SW slope of Svyataya Mt., *Quercus petraea*, *Acer*, *Paliurus*, *Fraxinus*, *Cornus* forest, in grass and litter, 20.04.2003; ♀, S slope near

Syuryu-Kaya Mt., sparse *Quercus petraea*, *Pyrus* with *Jasminum* beside *Quercus-Carpinus-Fraxinus* forest, in grass, 22.04.2003; 16 ♀♀, 8 ♂♂, NNW slope, *Quercus petraea*, *Pinus pallasiana* with sparse *Fraxinus* and *Cornus*, in litter and on the ground, 24.04.2003; 13 ♀♀, 8 ♂♂, NNW slope, *Quercus petraea*, *Pinus pallasiana* with sparse *Fraxinus* and *Cornus*, in litter and on the ground, 25.04.2003; 4 ♀♀, ♂, NW slope of Beregovoy range, upper border of *Quercus*, *Fraxinus*, *Pyrus* forest with *Cornus*, *Jasminum*, *Euonimus* and *Rosa*, 25.04.2003; 14 ♀♀, 11 ♂♂, *Fraxinus*, *Quercus* forest with *Cornus*,

on the ground and in grass, 15.10.2003; 5 ♀♀, 4 ♂♂, motley grass place in sparsed *Quercus* forest, in grass, 24.04.2003; 2 ♀♀, Syuryu-Kaya Mt. slope, sparse *Quercus pubescens* forest, in grass, 11.10.2003; 3 ♀♀, 6 ♂♂, *Quercus pubescens*, *Acer*, *Fraxinus* forest, in grass and under the stones, 11.10.2003; 4 ♂♂, Svyataya Mt. slope, edge of the *Quercus*, *Fraxinus*, *Acer* forest with *Pyrus* and *Jasminum*, in dead leaves and in grass, 12.10.2003; 15 ♀♀, 20 ♂♂, terraced slope with *Pinus*, 13.10.2003; 12 ♀♀, 7 ♂♂, NW slope, sparse *Quercus pubescens*, *Fraxinus*, *Pyrus* with *Jasminum*, 15.10.2003; 9 ♀♀, 4 ♂♂, **Lenin Distr.**, Opuk reserve, short gully with *Fragmitis*, in detritus and under the dead leaves, 17.04.2005 6 ♀♀, 5 ♂♂, S slope of Opuk Mt., cereals meadow, in grass, 18.04.2005; 2 ♀♀, 23.04.2005; ♀, 3 ♂♂, 24.04.2005; 2 ♀♀, 28.04.2005; ♂, cereals and *Teucrium*, in grass, 18.04.2005; ♀, cereals, in grass between stones, 19.04.2005; 2 ♀♀, ♂, cereals meadow near the spring, in grass, 20.04.2005; 2 ♂♂, cereals-*Artemisia* steppe, 21.04.2005; 2 ♀♀, 3 ♂♂, 21.04.2005; 12 ♀♀, 10 ♂♂, the place with *Fragmitis*, in detritus and on the soil, 21.04.2005; 2 ♀♀, gully near the beach, in grass, 23.04.2005; 2 ♀♀, in grass near the rocks, 24.04.2005; ♀, ♂, open place with *Stellaria media*, in grass, 28.04.2005; ♀, **Yalta**, Mys Martyan Reserve, *Arbutus*, *Quercus pubescens*, *Pinus pallasiana*, *Juniperus excelsa*, *J. oxycedrus*, *Carpinus* with *Cistus* and *Ruscus*, in litter, 09.06.2007 (Kovblyuk); ♀, E part of reserve, *Quercus pubescens*, *Carpinus*, *Juniperus excelsa*, *J. oxycedrus*, *Arbutus*, in litter, 07.04.2007 (Kovblyuk); ♀, *Quercus pubescens*, *Juniperus excelsa*, *J. oxycedrus*, *Arbutus*, *Rosa*, *Ruscus*, in litter, 05.05.2001 (Kovblyuk); 2 ♀♀, *Juniperus excelsa*, *J. oxycedrus*, *Quercus pubescens*, *Arbutus* forest with *Buxus*, *Cistus* and *Ruscus*, in litter, 07.04.2007 (Kovblyuk); ♀, *Juniperus excelsa*, *Arbutus andrachne* with *Ruscus* and cereals, in grass, 05.05.2001; 10 ♀♀, 6 ♂♂, Botkin Path, E slope, *Pinus pallasiana* forest with *Quercus pubescens*, *Carpinus orientalis*, *Swida* and *Ruscus*, in litter and in burrows of small rodents, 17.10.2002; ♀, ♂, E slope, *Quercus pubescens*, *Juniperus excelsa*, *J. oxycedrus*, *Jasminum*, *Asphodeline*, 17.10.2002; 4 ♀♀, 6 ♂♂, E slope, *Pinus pallasiana* forest with *Quercus pubescens*, *Carpinus orientalis*, among grass and in soil litter, 22.04.2002.

**COMMENTS.** This species differs from the related *Theonina cornix* (Simon, 1881) by the shape of lamella characteristica and elongated embolus which is curved distally. The lack of available sources with detailed drawings makes difficult identification of this species, and may lead to confusing it with *T. cornix*. Therefore, I provide detailed drawings.

**DISTRIBUTION.** Austria, Bulgaria, Czech Republic, Romania, Slovakia [Helsdingen, 2007], Caucasus [Tanasevitch, 1987, 1990]. Besides the Crimean peninsula the species is known from the southeast part of Ukraine: Kharkov [Polchaninova, pers. com.], Donetsk [Prokopenko, 2001, 2003] and Lugansk areas [Prokopenko, 2001].

### *Trichoncoides piscator* (Simon, 1884)

Figs 7a–f, 8.

*T. p.*: Georgescu, 1970: 211, fig. 1–8 (♂♀).

*T. p.* Tanasevitch, 1990: 104, f. 23.41, 24.18–19, 28.9 (♂♀).

**MATERIAL.** 9 ♀♀, 2 ♂♂, **Pheodosia Distr.**, Nanikovo Vill., Barakol Salt Lake side, *Salicornia*, *Artemisia* and sparse cereals, in detritus and on soil near water, 27.04.2003; 2 ♀♀, 4 ♂♂, in detritus, 16.10.2003; 3 ♀♀, less humid place, on soil and in its depressions, 27.04.2003; ♀, Karadagh Reserve, SW slope, cereal steppe with *Pistacia* terraced, 14.10.2003; 2 ♀♀, **Simferopol Distr.**, Skvortsovo Vill., cereal field, in grass and on soil, 16.04.2003; 3 ♀♀, **Chernomorsky Distr.**, Okunyovka Vill., Chokrak Lake side, cereals and *Onopordum*, in grass near stones, 17.04.2004; 2 ♂♂, **Saksy Distr.**, Pribrezhnaja Vill., *Artemisia* steppe, 08–17.02.2000 (Kovblyuk); 3 ♀♀, **Lenin Distr.**, Opuk Reserve, Koyashskoye Lake, sandy spit, *Salicornia*, on soil and in grass, 26.04.2005.

**COMMENTS.** The genus is a member of *Mioxena*-group of genera [Millidge, 1977]. *Trichoncoides piscator* is one of two *Trichoncoides* species and is quite rare in Ukraine.

**DISTRIBUTION.** Austria, Bulgaria, Corsica, Czech Republic, France, Hungary, Italy, Romania, Slovakia, Spain, former Yugoslavia [Helsdingen, 2007]; Russia (Russian Plain, Urals), Caucasus (Azerbaijan), Uzbekistan, Turkmenistan, Kyrgyzstan, Tajikistan [Mikhailov, 1997]. In Ukraine besides the Crimean peninsula the species is known from Lugansk [Polchaninova, pers. com.], Donetsk [Prokopenko, 2001] and Kherson areas [Polchaninova, 1988, 1998].

**ACKNOWLEDGEMENTS.** I am very much obliged to Nikolai Kovblyuk (Simferopol, Crimea) for supplying me with linyphiids from Crimea, Yuri Marusik (Magadan, Russia) for his help in improving the paper and to R. Leech for improving the English of final draft.

## References

- Buckle D.J., Carroll D., Crawford R.L., Roth V.D. 2001. Linyphiidae and Pimoidae of America north of Mexico: Checklist, synonymy, and literature // P. Paquin & D.J. Buckle (eds.). Contributions à la connaissance des araignées (Araneae) d'Amérique du Nord. Faberies, Supplément 10. P.89–191.
- Charitonov D.E. 1937. Contribution to the fauna of Crimean spiders // Festschr. Strand. Vol.3. P.127–140.
- Crosby C.R., Bishop S. C. 1933. American spiders: Erigonae, males with cephalic pits // Ann. Ent. Soc. Amer. Vol.26. P.105–172.
- Georgescu M. 1970. Donnees systematiques sur le genre *Trichoncoides* Denis (Araneae, Micryphantidae) // Reichenbachia. Vol.13. P.211–218.
- Helsdingen P.J. van. 2007. Araneae // Fauna Europaea Database (Version 2007.1). (<http://www.european-arachnology.org>)
- Kovblyuk N.M. 2003. [Catalog of spiders (Arachnida: Aranei) of the Crimea, South Ukraine] // Points on the development of the Crimea. Analytical, scientific and practical collected articles open to discussion. 15-th issue: problems of the ecology in the Crimea. Inventory animals and plants species in the Crimea. Simferopol: Tavriya – Plus. P.211–262 [in Russian].
- Kulczyński V. 1898. Symbola ad faunam araneorum Austriae inferioris cognoscendam // Rozpr. spraw. wyd. mat. przyrod. Akad. umiej. Cracov. Vol.36. P.1–114.
- Mikhailov K.G. 1998. Catalogue of the spiders (Arachnida, Aranei) of the territories of the former Soviet Union. Addendum I. Moscow: KMK Scientific Press. 48 pp.
- Miller F. 1947. Pavouci zvirena hadcovych stepi u Mohelna // Arch. Sv. Vyzk. ochr. prirod. kraj. zem. Morav. Vol.7. P.1–107.
- Miller F. 1966. Einige neue oder unvollkommen bekannte Zwergspinnen (Micryphantidae) aus der Tschechoslowakei (Araneida) // Acta ent. Bohemoslavaca. Vol. 63. P.149–164.
- Miller F. 1971. Pavouci-Araneida // Klic zvireny CSSR Vol.4. P.51–306.
- Miller F., Valesova E. 1964. Zur Spinnenfauna der Kalksteinstepfen des Radotiner Tales in Mittelbohmen // Cas. Csl. Spol. Ent. Vol.61. P.180–188.
- Millidge A.F. 1977. The conformation of the male palpal organs of linyphiid spiders, and its application to the taxonomic and phylogenetic analysis of the family (Araneae: Linyphiidae) // Bull. Br. Arachnol. Soc. Vol.4. P.1–60.
- Millidge A.F. 1978. The genera *Mecopisthes* Simon and *Hypsocephalus* n. gen. and their phylogenetic relationships (Araneae: Linyphiidae) // Bull. Br. Arachnol. Soc. Vol.4. P.113–123.
- Platnick N.I. 2008. The World Spider Catalog, Version 9.0. American Museum of Natural History, online at <http://research.amnh.org/entomology/spiders/catalog/index.html>
- Polchaninova N.Yu. 1988. [Spiders of the Chernomorskiy State Reserve] // Fauna i ekol. paukoobraznykh. Perm: Permsk. Univ. P.42–51 [in Russian].

- Polchaninova N.Yu. 1998. [Additions to the spider (Araneae) fauna of the Ivano-Rybalchansky Division of the Chernomorskiy Nature Reserve] // Entomologia v Ukraini (Pratzi 5 z'izdu Ukrainskogo entomologichnogo tovaristva, 7–11 veresnya 1998, Kharkiv). Vestn. Zool. Otd. Vyp. 9. P.148–150. [in Russian]
- Prokopenko H.V. 2001. [To the spider fauna (Aranei) of the Southeast of Ukraine] // Izvestiya Kharkovskogo Entomol. Obshch. Vol. 9. P.185–192 [in Russian].
- Prokopenko H.V. 2003. [The structure of spider population of wood plantations of Donetsk City] // Vestn. Zool. Otdeln. Vypusk No.16. P.108–110 [in Russian].
- Saaristo M.I., Tanasevitch A.V. 2000 Systematics of the *Bolyphantes-Poeciloneta* genus-group of the subfamily Micronetinae Hull, 1920 (Arachnida: Araneae: Linyphiidae) // Reichenbachia. Bd.33. P.255–265.
- Tanasevitch A.V. 1987. The linyphiid spiders of the Caucasus, USSR (Arachnida: Araneae: Linyphiidae) // Senckenberg. biol. Vol.67. P.297–383.
- Tanasevitch A.V. 1990. [The spider family Linyphiidae in the fauna of the Caucasus (Arachnida, Aranei)] // B.R. Striganova (ed.). Fauna nazemnykh bespozvonochnykh Kavkaza. Moscow: Akademia Nauk SSSR. P.5–114 [in Russian].
- Thaler K. Über wenig bekannte Zwergspinnen aus den Alpen — IX (Arachnida: Aranei, Linyphiidae: Erigoninae) // Revue suisse Zool. T.100. P.641–654.
- Thorell T. 1875b. Verzeichniss Sudrussischer Spinnen // Horae Soc. Ent. Ross. T.11. P.39–122.
- Wiehle H. 1960. Spinnentiere oder Arachnoidea (Araneae). XI. Micryphantidae-Zwergspinnen // Tierwelt Deutschlands. Bd.47. S.1–620.
- Wunderlich J. 1970. Zur Synonymie einiger Spinnen-Gattungen und Arten aus Europa und Nordamerika (Arachnida: Araneae) // Senckenberg. biol. Bd.51. S.403–408.
- Wunderlich J. 1995. Beschreibung bisher unbekannter Arten der Baldachinspinnen aus der Östlichen Mediterraneis (Arachnida: Araneae: Linyphiidae) // Beitr. Araneol. Bd.4. S.655–686.