

More on the spider fauna (Arachnida, Aranei) of the lower reaches of Ob River and South Yamal, Russia

К фауне пауков (Arachnida, Aranei) северного Приобья и Южного Ямала, Россия

S.L. Esyunin¹, A.M. Laetin²
С.Л. Есюнин¹, А.М. ЛАЭТИН²

¹ Department of Zoology, Perm State University, Bukireva Street 15, Perm 614600 Russia.

¹ Кафедра зоологии беспозвоночных животных, Пермский государственный университет, ул. Букирева 15, Пермь 614600 Россия.

² Lunacharskogo Str. 11/2, apt. 87, Kirovo-Chepetsk, Kirov Area 613045 Russia.

² ул. Луначарского, д. 11/2, кв. 87, г. Кирово-Чепецк, Кировской обл. 613045 Россия.

KEY WORDS: spiders, West Siberia, Yamal, faunistics.

КЛЮЧЕВЫЕ СЛОВА: пауки, Западная Сибирь, Yamal, фаунистика.

ABSTRACT. A spider collection from the lower reaches of Ob River and South Yamal contains 55 species of 12 families. Of these, 35 species are reported from the area for the first time, and 3 are new to South Yamal. A linyphiid species of an unclear taxonomical status is described and illustrated.

РЕЗЮМЕ. Небольшая коллекция пауков из низовой Оби и с Южного Ямала содержит 55 видов, относящихся к 12 семействам. 35 видов впервые приводятся для низовой Оби и 3 — для Южного Ямала. Один вид линифид, таксономический статус которого не определен, описан и проиллюстрирован.

Introduction

The spider fauna of the southern part of Yamal Peninsula is comparatively well-known [see Esyunin & Efimik, 1996; Tanasevitch *et al.*, 2009] and contains 176 species [Esyunin, present and unpublished data]. The regional spider fauna of the lower reaches of Ob River remains poorly studied [see Esyunin & Efimik, 1996; Koponen *et al.*, 1998]. To date, only 68 species are known from there; of these 35 species are recorded here for the first time.

Material and methods

The material was collected by the second author (AL) during his 1979–1980 expeditions to Yamal Peninsula. The majority of spiders were collected from tree branches by knocking spiders onto a piece of cloth. A small part of the material was collected by sweeping and by hand-picking from the vegetation and moss.

The material is deposited in the collections of the Department of Zoology of the Perm State University (PSU).

Chaetotaxy is given in a special formula, e.g. TiI 2-1-1-4, which means that tibia I has two dorsal, one pro- and one retrolateral spine, and four ventral spines (the apical spines are disregarded). The sequence of leg segment measurements is as follows: femur + patella + tibia + metatarsus + tarsus. All measurements are given in mm. For a complete set of taxonomic references for each species see Platnick [2009].

Description of the collecting localities (Map 1)

1. Tyumen Region, Yamalo-Nenets Autonomous Area, Priuralsk District, c. 33 km S of Salekhard, Pel'vozh Vil., 66°14'N, 66°38'E (the border of northern taiga and forest-tundra), VIII.1979.

2. Tyumen Region, Yamalo-Nenets Autonomous Area, Salekhard, 66°32'N, 66°38'E (forest-tundra), VIII.1979 & VIII.1980.

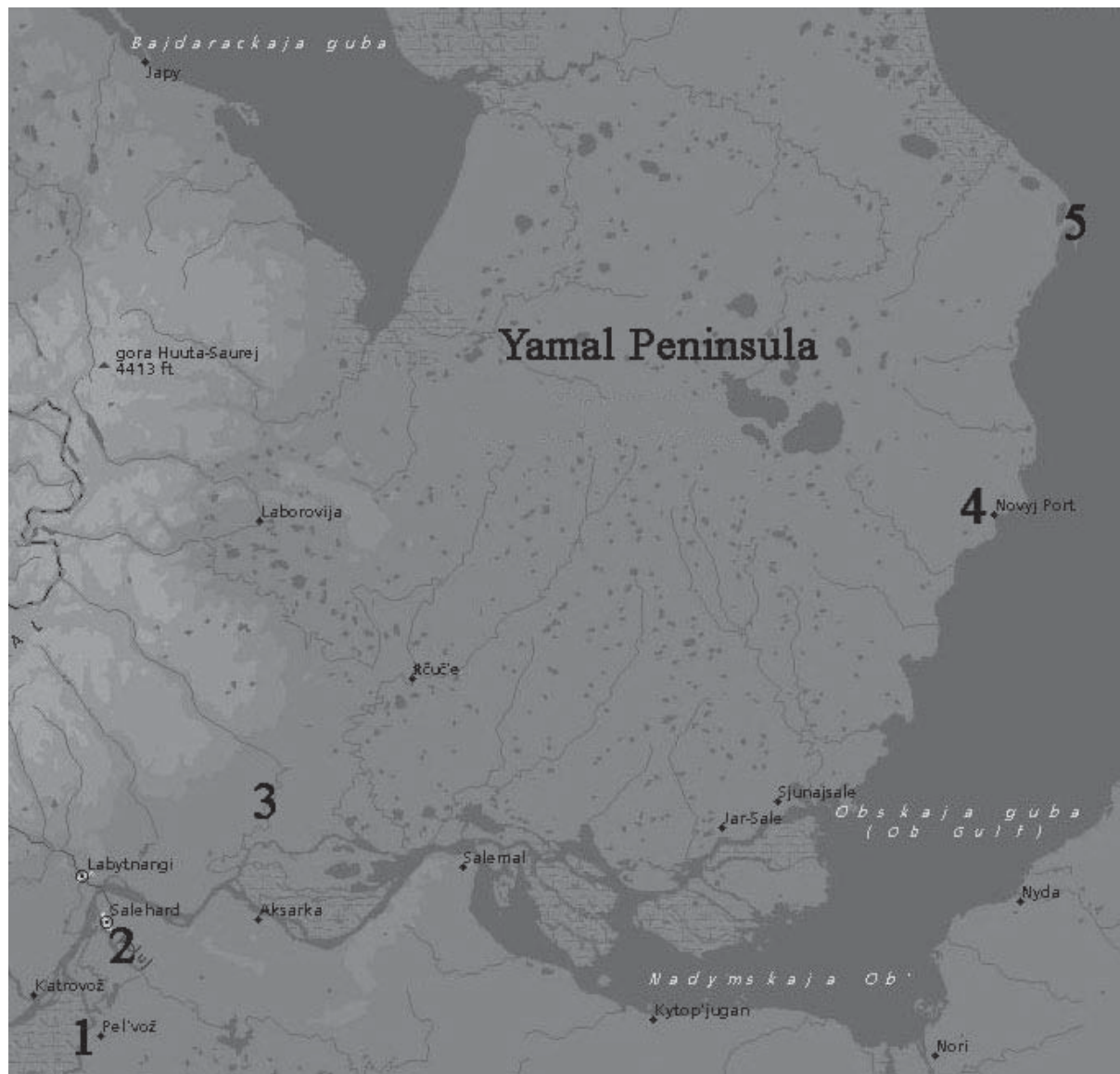
3. Tyumen Region, Yamalo-Nenets Autonomous Area, Priuralskiy Distr., c. 39 km N of Aksarka Vil., the right bank of Shchyuchya River at the mouth of Nibiyakha River, Beloyarsk Vil., 66°55'N, 67°40'E (forest-tundra), VIII.1979.

4. Tyumen Region, Yamalo-Nenets Autonomous Area, Yamalskiy Distr., Novyi Port Vil., 67°42'N, 72°55'E, VIII.1980.

5. Tyumen Region, Yamalo-Nenets Autonomous Area, Yamalskiy Distr., Kamennyi Mys (c. 68°30'N, 73°20'E), VII.1980.

List of species

(* — species recorded for the first time from the lower reaches of Ob River; ** — species recorded for the first time from the Yamal Peninsula)



Map. The collecting localities: 1 — Pel'vozh Vil., 2 — Salehard, 3 — Beloyarsk Vil., 4 — Novyi Port Vil., 5 — Kamennyi Mys.
Карта. Места сборов: 1 — поселок Пельвож, 2 — Салехард, 3 — поселок Белоярск, 4 — поселок Новый Порт, 5 — Каменный Мыс.

Fam. ARANEIDAE

Aculepeira packardi (Thorell, 1875)*

MATERIAL. Pel'vozh (PSU-5184): 1 subadult ♀, bog with *Betula nana* and *Ledum*, sweeping, 11.VIII.1979.

REMARKS. The species is determined on the basis of dorsal abdominal pattern. Besides the present site, the species has been known from the adjacent territory of the Polar Urals [Koponen *et al.*, 1998].

Araneus marmoreus Clerck, 1758*

MATERIAL. Pel'vozh (PSU-5185): 1 ♀, birch (*Betula*) light forest, 13.VII.1979.

Araneus quadratus Clerck, 1758

MATERIAL. Pel'vozh (PSU-5186): 1 ♀, birch (*Betula*) light forest with *Picea* and *Larix*, sweeping on *Ledum*, 9.VIII.1979; 1 ♂, coniferous light forest with birch (*Betula*) and *Betula nana*, sweeping, 10.VIII.1979; 1 ♀, hummocky fen, sweeping, 11.VIII.1979.

Hypsosinga sp.

MATERIAL. Pel'vozh: 2 subadult ♂♂, 1 subadult ♀, birch (*Betula*) light forest with *Picea* and *Larix*, sweeping of *Ledum*, 9.VIII.1979; 1 subadult ♂, bog with *Betula nana* and *Ledum*, sweeping, 11.VIII.1979.

REMARKS. From the adjacent Polar Urals, two species of *Hypsosinga* have been known [Koponen *et al.*, 1998]: *H.*

albovittata (Westring, 1851) and *H. pygmaea* (Sundevall, 1831). Our specimens are similar to *H. albovittata* in having light median dorsal spots on the abdomen, but there are no white spots on the cephalic part of carapace.

Larinioides cornutus (Clerck, 1758)

MATERIAL. Pel'vozh (PSU-5222): 1 ♂, 1 ♀, building, 5.VIII.1979; 4 ♀, birch (*Betula*) light forest with *Picea*, *Larix* and *Ledum*, branches of birch (*Betula*), 5–9.VIII.1979; 1 ♂, same biotope, sweeping on *Ledum*, 9.VIII.1979; 1 ♂, mixed (coniferous-birch) light forest, branches of spruce (*Picea*), 6.VIII.1979; 2 ♀♀, meadow, sweeping, 7.VIII.1979; 1 ♂, hummocky fen, sweeping, 11.VIII.1979; 2 ♂♂, 5 ♀♀, on alder (*Alnus*), 19.VIII.1979.

Salekhard (PSU-5177): 3 ♂♂, 9 ♀♀, building, 3.VIII.1979 & 4–6.VII.1980.

Kamennyj Mys (PSU-5159): 9 ♀, on *Salix*, 23.VII.1980.

Larinioides patagiatus (Clerck, 1758)*

MATERIAL. Pel'vozh (PSU-5223): 3 ♂♂, 5 ♀♀, mixed (coniferous-birch) light forest, sweeping on *Ledum*, 5–6.VIII.1979; 2 ♂♂, 23 ♀♀, birch (*Betula*) light forest with *Picea*, *Larix* and *Ledum*, branches of birch (*Betula*), 5–9.VIII.1979; 1 ♂, 2 ♀♀, same biotope, branches of larch (*Larix*), 4–7.VIII.1979; 9 ♂♂, 4 ♀♀, same biotope, branches of spruce (*Picea*), 9.VIII.1979; 7 ♀♀, same biotope, branches of willow (*Salix*), 9.VIII.1979; 3 ♂♂, 1 ♀, same biotope, sweeping on *Ledum*, 9.VIII.1979; 1 ♂, meadow, sweeping, 7.VIII.1979; 2 ♀♀, hummocky fen, sweeping, 11.VIII.1979; 1 ♂, coniferous light forest with birch (*Betula*) and *Betula nana*, branches of larch (*Larix*), 12.VIII.1979; 1 ♂, 1 ♀, same biotope, sweeping, 10.VIII.1979; 1 ♂, 3 ♀♀, bog with *Betula nana* and *Ledum*, sweeping, 11–12.VIII.1979; 1 ♂, 3 ♀♀, on alder (*Alnus*), 19.VIII.1979.

Fam. CLUBIONIDAE

Clubiona interjecta L. Koch, 1879*

MATERIAL. Pel'vozh (PSU-5187): 1 ♂, 1 ♀, birch (*Betula*) light forest with *Picea*, *Larix* and *Ledum*, branches of spruce (*Picea*), 9.VIII.1979; 1 ♀, bank of river, 11.VIII.1979.

REMARKS. This species is widely distributed in Siberia, Mongolia and China [Mikhailov, 2003]: from Tyumen and Tomsk Regions to Sakhalin and Maritime Territory. The present locality seems to be on the north-westernmost limit in the species' range.

Clubiona kulczynskii Lessert, 1905*

MATERIAL. Pel'vozh (PSU-5188): 1 ♀, birch (*Betula*) light forest with *Picea*, *Larix* and *Ledum*, branches of birch (*Betula*), 5.VIII.1979; 1 ♀, on alder (*Alnus*), 19.VIII.1979.

Fam. DICTYNIDAE

Dictyna alaskae Chamberlin et Ivie, 1947*

MATERIAL. Pel'vozh (PSU-5189): 1 ♀, mixed (coniferous-birch) light forest, branches of spruce (*Picea*), 6.VIII.1979; 1 ♂, birch (*Betula*) light forest with *Picea* and *Larix*, sweeping on *Ledum*, 9.VIII.1979.

Dictyna arundinacea (Linnaeus, 1758)

MATERIAL. Pel'vozh (PSU-5190): 1 ♀, birch (*Betula*) light forest with *Picea*, *Larix* and *Ledum*, branches of larch (*Larix*),

4.VIII.1979; 2 ♀♀, same biotope, sweeping on *Ledum*, 5–9.VIII.1979.

Dictyna schmidtii Kulczyński, 1926 sensu Lehtinen, 1967*

MATERIAL. Pel'vozh (PSU-5191): 1 ♀, mixed (coniferous-birch) light forest, branches of spruce (*Picea*), 6.VIII.1979; 1 ♀, birch (*Betula*) light forest with *Picea* and *Larix*, sweeping on *Ledum*, 9.VIII.1979; 1 ♀, hummocky fen, 11.VIII.1979.

Dictyna shilenkovi Danilov, 2000*

D. shilenkovi Danilov, 2000: 42, Figs 19–20 (♀ only)

MATERIAL. Pel'vozh (PSU-5192): 5 ♀♀, on alder (*Alnus*), 19.VIII.1979.

REMARKS. Recently, Danilov [2000] described *Dictyna shilenkovi* Danilov, 2000, from Buryatia (Transbaikalia). In his diagnosis [Danilov, 2000: p.42], he noticed that *D. shilenkovi* is very similar to *D. schmidtii* Kulczyński, 1926. Having examined Kulczyński's figures [1926: figs 1–3], we have concluded that males of both species seem to be identical (cf. figs 17–18 in Danilov [2000]), but they differ from the figures of *D. schmidtii* given by Palmgren [1977: fig. 4.9] and Lehtinen [1967: fig. 321]. Thus, the *D. shilenkovi* is likely to be a junior synonym of *D. schmidtii*, whereas *D. 'schmidtii'* [sensu Lehtinen, 1967] seems to be a different species. Yu.M. Marusik came to the same opinion, as Danilov [2008] mentioned recently. Nevertheless, in the present work we have used the name *D. shilenkovi*, waiting for the aforementioned synonymy to be finally decided and published.

Dictyna uncinata Thorell, 1856*.*

MATERIAL. Pel'vozh (PSU-5193): 3 ♀♀, mixed (coniferous-birch) light forest, sweeping on *Ledum*, 5.VIII.1979; 7 ♀, birch (*Betula*) light forest with *Picea*, *Larix* and *Ledum*, branches of spruce (*Picea*), 9.VIII.1979.

Salekhard (PSU-5178): 2 ♀♀, building, 3.VIII.1979.

Beloyarsk (PSU-5167): 3 ♀♀, coniferous light forest with *Alnus*, branches of spruce (*Picea*), 18.VIII.1979.

Emblyna annulipes (Blackwall, 1846)*

MATERIAL. Pel'vozh (PSU-5194): 3 ♀♀, birch (*Betula*) light forest with *Picea*, *Larix* and *Ledum*, branches of larch (*Larix*), 2.VIII.1979; 11 ♀♀, same biotope, trunk of larch (*Larix*), 4–5.VIII.1979; 5 ♀♀, coniferous light forest with birch (*Betula*) and *Betula nana*, branches of larch (*Larix*), 12.VIII.1979.

Salekhard (PSU-5179): 1 ♀, building, 4–6.VII.1980.

Fam. GNAPHOSIDAE

Gnaphosa microps Holm, 1939*

MATERIAL. Pel'vozh (PSU-5195): 1 ♂, bog with *Betula nana* and *Ledum*, sweeping, 11–12.VIII.1979.

Fam. HAHNIIDAE

Cryphoeca silvicola (C.L. Koch, 1834)*

MATERIAL. Pel'vozh (PSU-5216): 3 ♀♀, birch (*Betula*) light forest with *Picea*, *Larix* and *Ledum*, trunks of larch, 7.VIII.1979; 1 subadult ♀, on alder (*Alnus*), 19.VIII.1979.

Fam. LINYPHIIDAE

Agyphantes expunctus (O. Pickard-Cambridge, 1875)

MATERIAL. Pel'vozĥ (PSU-5219): 5 ♂♂, 16 ♀♀, birch (*Betula*) light forest with *Picea*, *Larix* and *Ledum*, branches of larch (*Larix*), 2–9.VIII.1979; 1 ♂, 7 ♀♀, same biotope, branches of spruce (*Picea*), 9.VIII.1979; 1 ♂, mixed (coniferous-birch) light forest, branches of spruce (*Picea*), 6.VIII.1979; 4 ♀♀, coniferous light forest with birch (*Betula*) and *Betula nana*, branches of spruce (*Picea*), 13.VIII.1979.

Beloyarsk (PSU-5168): 3 ♀♀, coniferous light forest with *Alnus*, 18.VIII.1979.

Bathyphantes gracilis (Blackwall, 1841)

MATERIAL. Kamennyj Mys (PSU-5218): 1 ♀, moss-lichen tundra, 18.VII.1980.

Bathyphantes jeniseicus Eskov, 1979*

Figs 1, 7.

B. jeniseicus Eskov, 1979: 65, figs 1, 2, 15, 16 (♂♀).

MATERIAL. Pel'vozĥ (PSU-5221): 1 ♂, birch (*Betula*) light forest with *Picea*, *Larix* and *Ledum*, branches of spruce (*Picea*), 9.VIII.1979.

REMARKS. This species was originally described from Yenisei River [Eskov, 1979], and it has been repeatedly recorded from Evenkiya, southern Sakhalin, Khabarovsk Territory [Eskov, 1988, 1992], Amur Region and Maritime Territory [Tanasevitch, 2006, 2008]. The lower reaches of Ob River is the westernmost record of this Siberian boreal species, lying at the northernmost limit of its range.

Bathyphantes setiger F.O. Pickard-Cambridge, 1894)*

MATERIAL. Pel'vozĥ (PSU-5217): 2 ♀♀, bog with *Betula nana* and *Ledum*, sweeping, 11–12.VIII.1979.

?*Bathyphantes* sp.*

Figs 4–6.

MATERIAL. Salekhard (PSU): 1 ♀, building, 3.VIII.1979.

DESCRIPTION. Total length 6.0. Carapace 2.0 long, 1.4 wide, yellow-brown. Sternum brown. Chelicerae: yellow-brown, with blackened tips, anterior margin with five teeth (three median biggest), posterior margin with four small teeth. Legs brownish yellow. Leg I 8.8 long (2.3 + 0.5 + 2.3 + 2.4 + 1.3), IV 7.8 long (2.3 + 0.5 + 1.8 + 2.2 + 1.0). Chaetotaxy: FeI-III 1-1-0-0, IV 1-0-0-0. — Ti I-II 2-1-2-3, III-IV 2(1)-1-0-2. — Mt I-IV 1-1-0-1. Metatarsi I-III each with a trichobothrium. TmI 0.21. The pedipalp with blackened tips and with numerous thin long setae. The tarsus of pedipalp with two transverse rows of spines and the claw. Abdomen 4.0 long, 3.3 wide, dorsally white with a dark longitudinal spot anteriorly, medially with three thin longitudinal stripes, posteriorly with a transverse spot; ventrally brown with numerous white specks between the epigyne and spinnerets. Epigyne (Figs 4–6) triangular in shape with wrinkled surface; back edge with a small groove. Dorsal plate cross-oval, with the copulatory openings on anterior edge. The insemination duct thin, with a loop on the top. Entrance ducts wide, helical, with two coils; receptacles V-shaped.

REMARKS. In absence of conspecific males, this female cannot be positively identified to genus. According to the somatic characteristics and the basic epigynal conformation, this species belongs to the subfamily Linyphiinae. Generally, the epigyne shows some similarity to that of *Taranucnus setosus* (O. Pickard-Cambridge, 1863). However, the vulva is totally different. By its vulva structure, the specimen is similar to some representatives of the genera *Bathyphantes*, *Linyphia* or *Microlinyphia*, but differs in the absence of the epigynal cavity. From *Frontinellina frutetorum* (C.L. Koch, 1834), which has similar structure of dorsal plate and fertilization duct, our specimen differs by the presence of helical ducts. By the epigyne and vulval structure, ?*Bathyphantes* sp. seems to be most similar to *Bathyphantes tongluensis* Chen et Song, 1988 and *Microlinyphia impigra* (O. Pickard-Cambridge, 1871), but differs in the absence of the epigynal cavity, and by the shape of receptacula.

Bolephthyphantes index (Thorell, 1856)

MATERIAL. Pel'vozĥ (PSU-5220): 1 ♀, dwarf birch (*Betula nana*) stand, 6.VIII.1979; 1 ♂, 7 ♀♀, mixed (coniferous-birch) light forest, branches of spruce (*Picea*), 6.VIII.1979; 6 ♀♀, birch (*Betula*) light forest with *Picea*, *Larix* and *Ledum*, branches of larch (*Larix*), 4–5.VIII.1979; 4 ♂♂, 8 ♀♀, same biotope, branches of spruce (*Picea*), 9.VIII.1979; 1 ♂, 5 ♀♀, same biotope, sweeping on *Ledum*, 9.VIII.1979; 1 ♀, hummocky fen, sweeping, 11.VIII.1979; 1 ♀, coniferous light forest with *Alnus*, branches of spruce (*Picea*), 18.VIII.1979; 4 ♂♂, 15 ♀♀, coniferous light forest with birch (*Betula*), branches of spruce (*Picea*), 19.VIII.1979; 1 ♂, 2 ♀♀, same biotope, sweeping, 10.VIII.1979; 1 ♀, bog with *Betula nana* and *Ledum*, sweeping, 11.VIII.1979.

Beloyarsk (PSU-5169): 5 ♀♀, coniferous light forest with *Alnus*, branches of spruce (*Picea*), 18.VIII.1979.

Erigone longipalpis (Sundevall, 1830)*

MATERIAL. Salekhard (PSU-5180): 5 ♂♂, 1 ♀, on soil, 4–6.VII.1980.

Helophora insignis (Blackwall, 1841)

MATERIAL. Pel'vozĥ (PSU-5214): 1 subadult ♂, mixed (coniferous-birch) light forest, sweeping on *Ledum*, 5.VIII.1979; 1 ♀, birch (*Betula*) light forest with *Picea* and *Larix*, sweeping on *Ledum*, 9.VIII.1979; 2 ♀♀, coniferous light forest with birch (*Betula*) and *Betula nana*, sweeping, 10.VIII.1979.

Hilaira glacialis (Thorell, 1872)

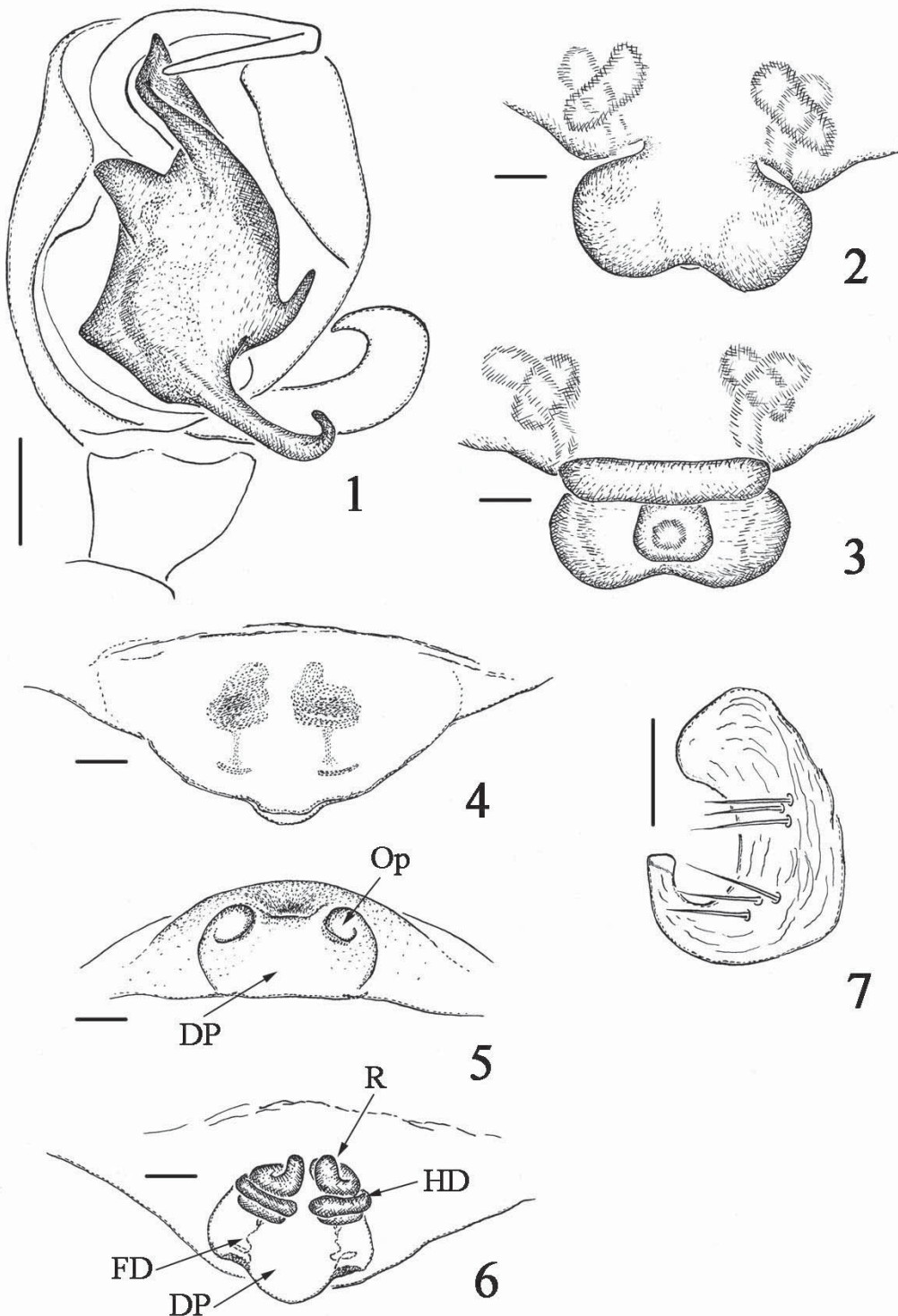
MATERIAL. Kamennyj Mys (PSU-5160): 1 ♀, moss-lichen tundra, 19.VII.1979; 3 ♀♀, same biotope, in lichen, 17–18.VII.1980.

Hypselistes jacksoni (O. Pickard-Cambridge, 1902)**

MATERIAL. Beloyarsk (PSU-5170): 1 ♀, birch (*Betula*) light forest with *Picea* and *Larix*, sweeping on *Ledum*, 9.VIII.1979; 1 ♀, coniferous light forest with *Alnus*, 18.VIII.1979.

Kaestneria pullata (O. Pickard-Cambridge, 1863)*

MATERIAL. Pel'vozĥ (PSU-5196): 1 ♀, bog with *Betula nana* and *Ledum*, sweeping, 11.VIII.1979.



Figs 1–7. The copulatory organs of *Bathyphantes jeniseicus* Eskov, 1979 (1, 7), *Mughiphantes suffusus* (Strand, 1901) (2–3) and ?*Bathyphantes* sp. (4–6): 1 — palp, ventral view; 2–5 — epigyne, ventral (2, 4) and rear (3, 5) views, respectively; 6 — vulva; 7 — paracymbium. Abbreviations: DP — dorsal plate; FD — fertilization duct; HD — helical entrance duct; Op — openings; R — receptacle. Scale 0.1 mm.

Рис. 1–7. Гениталии *Bathyphantes jeniseicus* Eskov, 1979 (1, 7), *Mughiphantes suffusus* (Strand, 1901) (2–3) и ?*Bathyphantes* sp. (4–6): 1 — палец, снизу; 2–5 — эпигина соответственно снизу (2, 4) и сзади (3, 5); 6 — эндогина; 7 — парацимбиум. DP — дорсальная пластинка; FD — оплодотворительные каналы; HD — закрученный каналы; Op — вводные отверстия; R — рецептакулы. Масштаб 0,1 мм.

Minyrioloides trifrons (O. Pickard-Cambridge, 1863)*

MATERIAL. Pel'vozh (PSU-5215): 1 ♀, coniferous light forest with birch (*Betula*) and *Betula nana*, branches of larch (*Larix*), 12.VIII.1979; 2 ♀♀, same biotope, sweeping, 10.VIII.1979.

Mughiphantes (Suffisiphantes) suffusus (Strand, 1901)*

Figs 2–3.

MATERIAL. Pel'vozh (PSU-5166): 1 ♀, 2.5 km N of village, branches of alder (*Alnus*) and sorb (*Sorbus*), 12.VIII.1979.

Obscuriphantes obscurus (Blackwall, 1841)*

MATERIAL. Pel'vozh (PSU-5197): 1 ♀, birch (*Betula*) light forest with *Picea*, *Larix* and *Ledum*, branches of spruce (*Picea*), 9.VIII.1979.

Beloyarsk (PSU-5171): 1 ♀, coniferous light forest with *Alnus*, 18.VIII.1979.

Oreoneta leviceps (L. Koch, 1879)

MATERIAL. Kamennyj Mys (PSU-5161): 2 ♀♀, moss-lichen tundra, in lichen, 17.VII.1980; 1 ♀, same locality, rock in tundra, 19.VII.1980.

Pelecopsis parallela (Wider, 1834)**

MATERIAL. Kamennyj Mys (PSU-5163): 1 ♀, moss-lichen tundra, 19.VII.1979, A.M. Laetin.

Stemonyphantes conspersus (L. Koch, 1879)*

MATERIAL. Salekhard (PSU-5181): 1 ♀, building, 3.VIII.1979.

Tmeticus affinis (Blackwall, 1855)*

MATERIAL. Pel'vozh (PSU-5212): 1 ♂, birch (*Betula*) light forest with *Picea*, *Larix* and *Ledum*, branches of larch (*Larix*), 9.VIII.1979; 1 ♂, same biotope, sweeping on *Ledum*, 9.VIII.1979.

Wubanooides uralensis (Pakhorukov, 1981)*

MATERIAL. Salekhard (PSU-5183): 1 ♂, building, 4–6.VII.1980.

Fam. LYCOSIDAE

Alopecosa aculeata (Clerck, 1758)*

MATERIAL. Pel'vozh (PSU-5198): 1 ♀, hummocky fen, reindeer moss (*Cladonia*), 11.VIII.1979.

Alopecosa hirtipes (Kulczyński, 1907)

MATERIAL. Novyj Port (PSU-5165): 1 ♀, willow-bed (*Salix*) with grass and another herbs, 4.VIII.1980.

Alopecosa mutabilis (Kulczyński, 1908)

MATERIAL. Kamennyj Mys (PSU-5162): 1 ♂, moss-lichen tundra, 9.VII.1980.

Alopecosa solivaga (Kulczyński, 1901)

MATERIAL. Beloyarsk (PSU-5172): 1 ♀, coniferous light forest with *Alnus*, 18.VIII.1979.

Pardosa atrata (Thorell, 1872)

MATERIAL. Pel'vozh (PSU-5211): 2 ♀♀, meadow bog, 11.VIII.1979; 2 ♀♀, hummocky fen, 12.VIII.1979.

Pardosa hyperborea (Thorell, 1872)*

MATERIAL. Pel'vozh (PSU-5213): 2 ♀♀, tundra, 5.VIII.1979; 12 ♀♀, hummocky fen, reindeer moss (*Cladonia*), 10–12.VIII.1979; 4 ♀♀, birch (*Betula*) light forest with *Picea*, *Larix* and *Ledum*, 11.VIII.1979.

Beloyarsk (PSU-5173): 1 ♀, coniferous light forest with *Alnus*, 18.VIII.1979.

Pardosa lapponica (Thorell, 1872)

MATERIAL. Beloyarsk (PSU-5174): 4 ♀♀, hummocky fen, 16.VIII.1979; 1 ♀, coniferous light forest with *Alnus*, 18.VIII.1979.

Pardosa lasciva (L. Koch, 1879)*

MATERIAL. Pel'vozh (PSU-5199): 1 ♀, birch (*Betula*) light forest with *Picea*, *Larix* and *Ledum*, branches of spruce (*Picea*), 9.VIII.1979.

Pardosa oljunae Lobanova, 1978*

MATERIAL. Pel'vozh (PSU-5210): 2 ♀♀, birch (*Betula*) light forest with *Picea*, *Larix* and *Ledum*, 11.VIII.1979.

Beloyarsk (PSU-5175): 1 ♀, coniferous light forest with *Alnus*, 18.VIII.1979.

Pardosa septentrionalis (Westring, 1861)

MATERIAL. Beloyarsk (PSU-5176): 2 ♀♀, hummocky fen, 16.VIII.1979.

Pirata piraticus (Clerck, 1758)*

MATERIAL. Pel'vozh (PSU-5209): 1 ♀, meadow bog, 11.VIII.1979.

REMARKS. The unidentified female of the genus *Pirata* has been recorded from the lower reaches of Ob River [Koponen *et al.*, 1998]. We assume that the female collected by us belongs to *P. piraticus*.

Fam. SALTICIDAE

Evarcha falcata (Clerck, 1758)

MATERIAL. Pel'vozh (PSU-5200): 1 subadult ♀, birch (*Betula*) light forest with *Picea*, *Larix* and *Ledum*, branches of larch (*Larix*), 4.VIII.1979; 1 ♀, mixed (coniferous-birch) light forest, sweeping on *Ledum*, 5.VIII.1979; 1 ♂, bog with *Betula nana* and *Ledum*, sweeping, 12.VIII.1979.

Heliophanus camtschadalicus Kulczyński, 1885*

MATERIAL. Pel'vozh (PSU-5201): 1 ♀, bog with *Betula nana* and *Ledum*, sweeping, 12.VIII.1979.

Sitticus finschi (L. Koch, 1879)

MATERIAL. Pel'vozh (PSU-5202): 2 ♂♂, 2 ♀♀, birch (*Betula*) light forest with *Picea*, *Larix* and *Ledum*, trunks of larch, 7.VIII.1979.

Fam. TETRAGNATHIDAE

Tetragnatha dearmata Thorell, 1873*

MATERIAL. Pel'vozh (PSU-5203): 1 ♀, meadow, sweeping, 7.VIII.1979.

Tetragnatha extensa (Linnaeus, 1758)

MATERIAL. Pel'vozh (PSU-5208): 2 ♂♂, meadow, sweeping, 7.VIII.1979; 1 ♂, bog with *Betula nana* and *Ledum*, 10.VIII.1979.

Salekhard (PSU-5182): 1 ♀, building, 3.VIII.1979.

Fam. THERIDIIDAE

Ohlertidion ohlerti (Thorell, 1870)*

MATERIAL. Pel'vozh (PSU-5204): 1 ♂, 1 ♀, birch (*Betula*) light forest with *Picea*, *Larix* and *Ledum*, branches of spruce (*Picea*), 9.VIII.1979.

Fam. THOMISIDAE

Xysticus audax (Schrank, 1803)*

MATERIAL. Pel'vozh (PSU-5205): 1 ♀, coniferous light forest with birch (*Betula*) and *Betula nana*, branches of spruce (*Picea*), 13.VIII.1979.

Xysticus britcheri Gertsch, 1938*

MATERIAL. Pel'vozh (PSU-5207): 2 ♀♀, birch (*Betula*) light forest with *Picea* and *Larix*, sweeping of *Ledum*, 9.VIII.1979; 1 ♀, bog with *Betula nana* and *Ledum*, 10.VIII.1979.

Fam. ZORIIDAE

Zora nemoralis (Blackwall, 1861)*

MATERIAL. Pel'vozh (PSU-5206): 1 ♀, birch (*Betula*) light forest with *Picea*, *Larix* and *Ledum*, moss-lichen stratum, 4.VIII.1979.

REMARKS. Unidentified males and female of *Zora* were reported from the lower reaches of Ob River [Koponen *et al.*, 1998]. We could not find out distinctions between our specimen and the individuals of *Z. nemoralis* from the Middle Urals.

Discussion

Fifty five species belonging to 12 families have been found. Of them, 35 species are new records for the lower reaches of Ob River and three to southern Yamal Peninsula. One species remains of unclear taxonomical status and it has been provisionally assigned to the genus *Bathypantes*. The subadult specimens of *Hypsosinga* remains undetermined.

For two species, *Clubiona interjecta* and *Bathypantes jeniseicus*, the lower reaches of Ob River show the westernmost limits of their distribution. The latter has been first found in West Siberia. The northern limits of the ranges of some species (*Cryphoeca silvicola*, *Dictyna uncinata*, *Emblyna annulipes*, *Mughiphantes suffusus*, *Ohlertidion ohlerti*, *Pirata piraticus*, *Tetragnatha dearmata*, and *Wubanoidea uralensis*) have been expanded northwards in the Urals and the trans-Ural area.

ACKNOWLEDGEMENTS. We are very grateful to Dr. A.V. Tanasevitch (Moscow) for identification of some species and for valuable remarks and discussion on some taxonomic problems during the preparation of this paper. The help of two anonymous reviewers is specially acknowledged for kindly checking the English of the final draft and for making several important suggestions. We are also grateful to Dr. G.Sh. Farzalieva (Perm) whose drawings have been used in the present work. This work was supported in part by the Russian Foundation for Basic Research (projects ## 04-04-96000 & 09-04-01365) and through a grant of the President of the Russian Federation for the support of leading scientific schools (# 5367.2006.4).

References

- Danilov S.N. 2000. New data on the spiders of the family Dictynidae (Araneae) from Siberia // *Ekologia* (Bratislava). Vol.19. Suppl.3. P.37–40.
- Danilov S.N. 2008. [Catalogue of the spiders (Arachnida, Aranei) of Transbaikalia]. Ulan-Ude: BNC SO RAN Press. 108 p. [in Russian]
- Eskov K.Yu. 1979. [Three new species of spiders of the family Linyphiidae (Aranei) from Siberia] // *Fauna i ekologiya paukooobraznykh. Trudy Zool. Inst. AN SSSR*. Vol. 85. Leningrad. P.65–72 [in Russian].
- Eskov K.Yu. 1988. [Spiders (Aranei) of Middle Siberia] // *Materialy po faune Srednei Sibiri i prilozhaschikh raionov Mongolii*. Moscow. P.101–155 [in Russian].
- Eskov K.Yu. 1992. [New data on the spider family Linyphiidae (Aranei) of the Soviet Far East] // *Fauna i ekologiya paukov, skorpionov i lozhnoskorpionov SSSR. Trudy Zool. Inst. AN SSSR*. Vol. 226 (for 1990). Leningrad. P.52–60 [in Russian].
- Esyunin S.L., Efimik V.E. 1996. Catalogue of the spiders (Arachnida, Aranei) of the Urals. Moscow: KMK Scientific Press Ltd. 229 p.
- Koponen S., Marusik Yu.M., Tanasevitch A.V. 1998. New data on the spider fauna of the Polar Urals (Aranei) // *Arthropoda Selecta*. 1997. Vol.6. No.3/4. P.109–119.
- Lehtinen P.T. 1967. Classification of the Cribellate spiders and some allied families, with notes on the evolution of the suborder Araneomorpha // *Ann. Zool. Fennici*. Vol.4. No.3. P.1–468.
- Mikhailov K.G. 2003. The spider genus *Clubiona* Latreille, 1804 (Aranei: Clubionidae) in the fauna of the former USSR: 2003 update // *Arthropoda Selecta*. 2002. Vol.11 (for 2002). No.4. P.283–317.
- Palmgren P. 1977. Die Spinnenfauna Finnlands und Ostfennoskandiens. VIII. Argyronetidae, Agelenidae, Hahniidae, Dictynidae, Amaurobiidae, Titanoecidae, Segestriidae, Pholcidae, Sicariidae // *Fauna Fennica*. T.30. P.1–50.
- Platnick N. 2009. The World Spider Catalog, Version 10.0, American Museum of Natural History. Online at: <<http://research.amnh.org/entomology/spiders/catalog/INTRO1.html>>
- Tanasevitch A.V. 2006. Linyphiid spiders of the Norsky Nature Reserve, Amurskaya Area, Russian Far East (Arachnida: Aranei) // *Arthropoda Selecta*. 2006(2005). Vol. 14, No 4. P. 339–345.

Tanasevitch A.V. 2008. New records of linyphiid spiders from Russia, with taxonomic and nomenclatural notes (Aranei: Linyphiidae) // *Arthropoda Selecta*. Vol.16 (for 2007). No.2. P.115–135.

Tanasevitch A.V., Koponen S., Kaarlejarvi E. 2009. Small collection of spiders (Aranei) from the Polar Urals and Yamal Peninsula, Russia // *Arthropoda Selecta*. Vol.17 (for 2008). No.3–4. P.185–190.